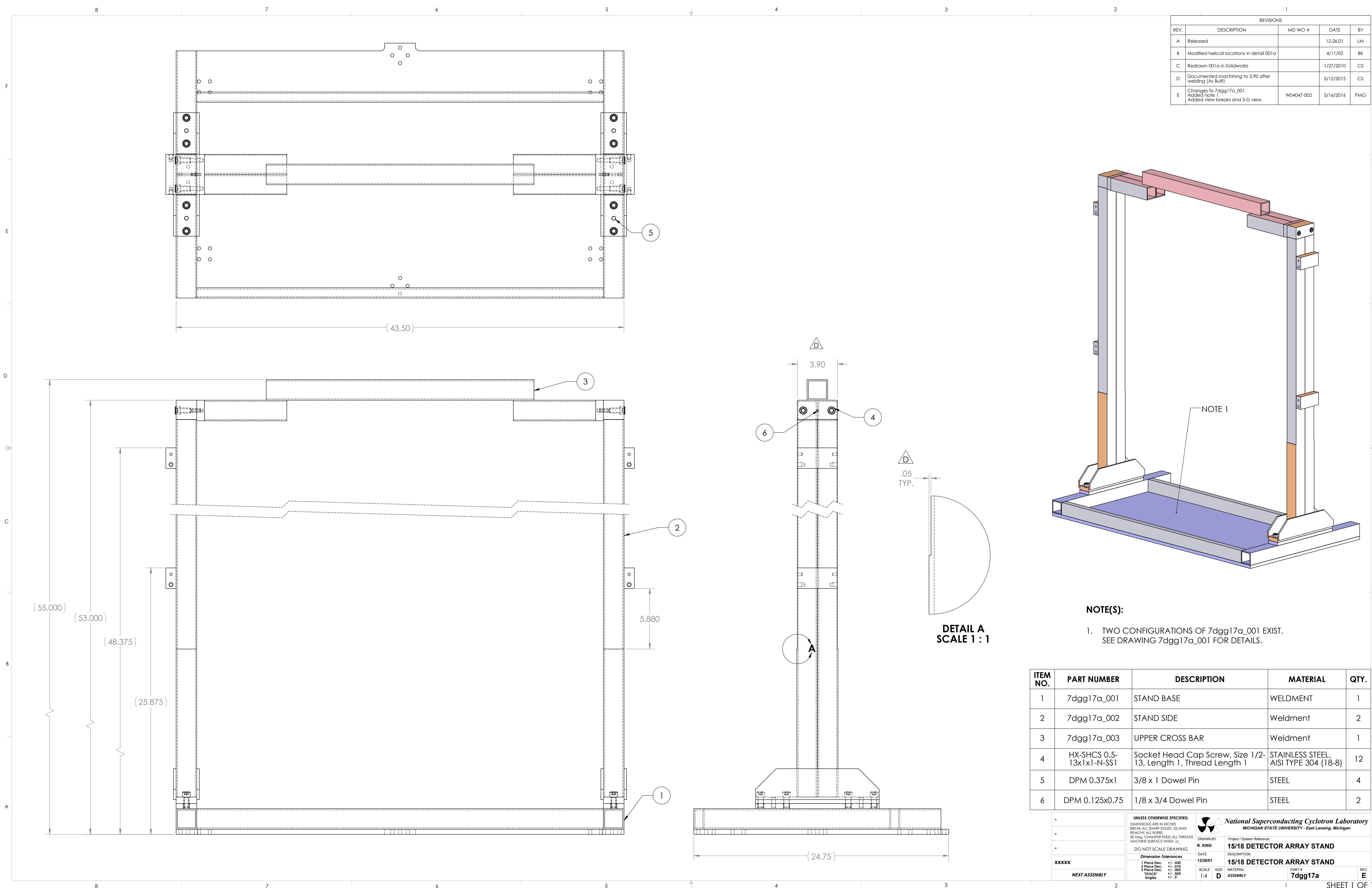


[illegible][illegible]

- [illegible]

[illegible]

This figure presents a technical drawing of a detector array stand, including a main elevation view, a side view, a detail A, and an isometric assembly view.

The main elevation view shows the overall dimensions of the stand base and side rails. Key dimensions include a total width of 43.50 inches and a height of 55.000 inches. The side view shows the profile of the stand, with a width of 24.75 inches at the base. Detail A provides a close-up of the mounting bracket, showing dimensions such as 3.90 inches and .05 TYP. for the mounting holes.

The isometric assembly view illustrates the complete stand structure, including the upper cross bar and the detector array. It includes a note indicating that two configurations of the detector array exist, referencing drawing 7dgg17a_001 for details.

REVISIONS

| REV. | DESCRIPTION | MD WO # | DATE | BY |
|------|---|------------|-----------|-----|
| A | Released | | 12.26.01 | LM |
| B | Modified helicoil locations in detail 001a | | 4/11/02 | BK |
| C | Redrawn 001a in Solidworks | | 1/27/2010 | CS |
| D | Documented machining to 3.90 after welding (As Built) | | 5/12/2015 | CS |
| E | Changes to 7dgg17a_001. Added note 1. Added view breaks and 3-D view. | W04047-002 | 5/16/2016 | PMG |

NOTE(S):

- TWO CONFIGURATIONS OF 7dgg17a_001 EXIST.
SEE DRAWING 7dgg17a_001 FOR DETAILS.

| ITEM NO. | PART NUMBER | DESCRIPTION | MATERIAL | QTY. |
|----------|--------------------------|---|---------------------------------------|------|
| 1 | 7dgg17a_001 | STAND BASE | WELDMENT | 1 |
| 2 | 7dgg17a_002 | STAND SIDE | Weldment | 2 |
| 3 | 7dgg17a_003 | UPPER CROSS BAR | Weldment | 1 |
| 4 | HX-SHCS 0.5-13x1x1-N-SS1 | Socket Head Cap Screw, Size 1/2-13, Length 1, Thread Length 1 | STAINLESS STEEL, AISI TYPE 304 (18-8) | 12 |
| 5 | DPM 0.375x1 | 3/8 x 1 Dowel Pin | STEEL | 4 |
| 6 | DPM 0.125x0.75 | 1/8 x 3/4 Dowel Pin | STEEL | 2 |

UNLESS OTHERWISE SPECIFIED:
DIMENSIONS ARE IN INCHES
BREAK ALL SHARP EDGES .02 MAX.
REMOVE ALL BURRS
30 Deg CHAMFER ENDS ALL THREADS
MACHINE SURFACE FINISH .63 /
DO NOT SCALE DRAWING

Dimension Tolerances

| Feature | 1 Place Dec. | 2 Place Dec. | 3 Place Dec. | "STOCK" | Angles |
|---------|--------------|--------------|--------------|----------|---------|
| | +/- .030 | +/- .010 | +/- .005 | +/- .060 | +/- .5° |

SCALE: 1:4
SHEET: 1 of 1