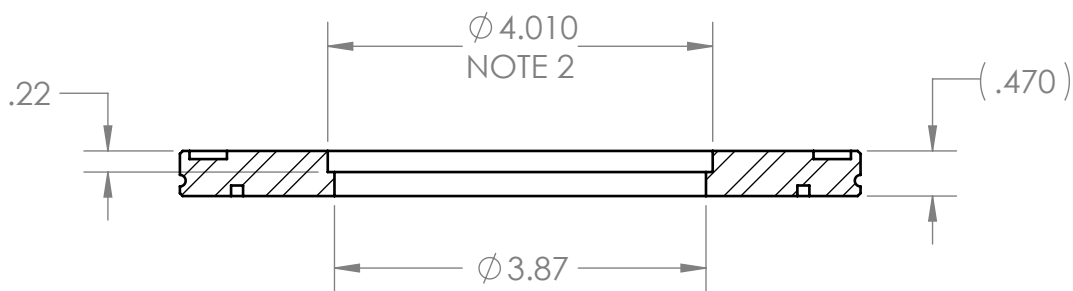
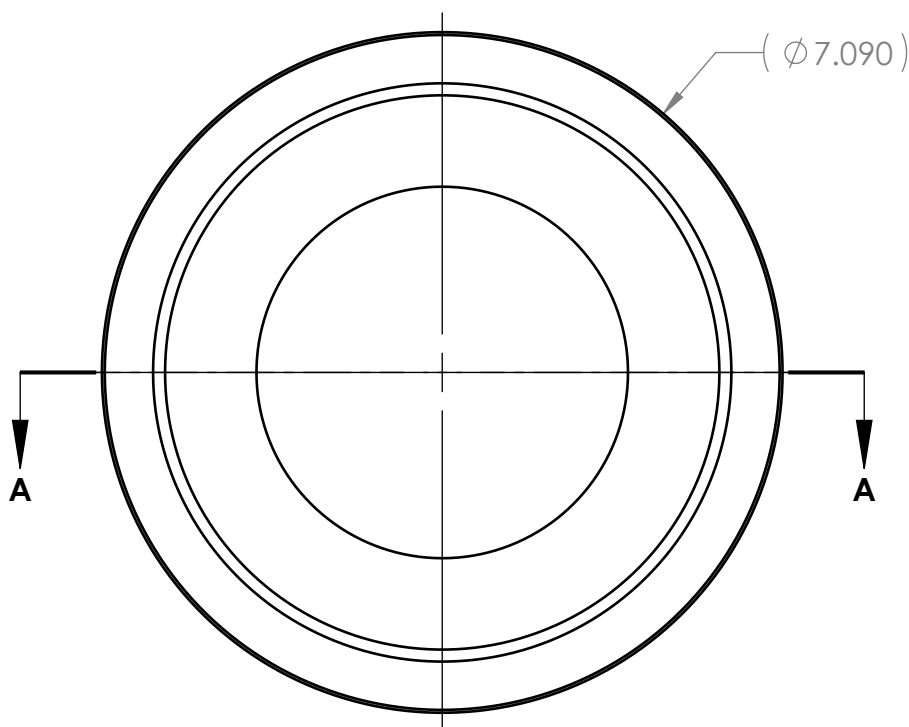


REVISIONS				
REV.	DESCRIPTION	MD WO #	DATE	BY
3	Released	W04047-002	12-MAY-2016	PMG




SECTION A-A



NOTE(S):

1. MAKE FROM MDC # 812002 OR EQUIVALENT NW160 ISO LF FLANGE BLANK.
2. MACHINE TO FIT PART N3010217-MDE-0001-0044. (SEE DRAWING N3010217-MDE-0001-0005.)

-	<div>UNLESS OTHERWISE SPECIFIED:</div> <div>DIMENSIONS ARE IN INCHES BREAK ALL SHARP EDGES .02 MAX. REMOVE ALL BURRS 30 Deg. CHAMFER ENDS ALL THREADS MACHINE SURFACE FINISH $\sqrt{63}$</div> <div>DO NOT SCALE DRAWING</div>	<div></div> <div><i>National Superconducting Cyclotron Laboratory</i> MICHIGAN STATE UNIVERSITY - East Lansing, Michigan</div>			
-		DRAWN BY C. NORAT	Project / System Reference Proton Detector Top Assembly		
-					
N3010217-MDE-0001-0005	<div><i>Dimension Tolerances</i></div> <div>1 Place Dec. ±.030 2 Place Dec. ±.010 3 Place Dec. ±.005 "Stock" ±.060 Angles ±.5°</div>	SCALE 1:2	DATE MAY 2016	DESCRIPTION Modified ISO LF Flange 'B'	
NEXT ASSEMBLY		SIZE A	MATERIAL AISI 304	PART # N3010217-MDE-0001-0075	REV 3