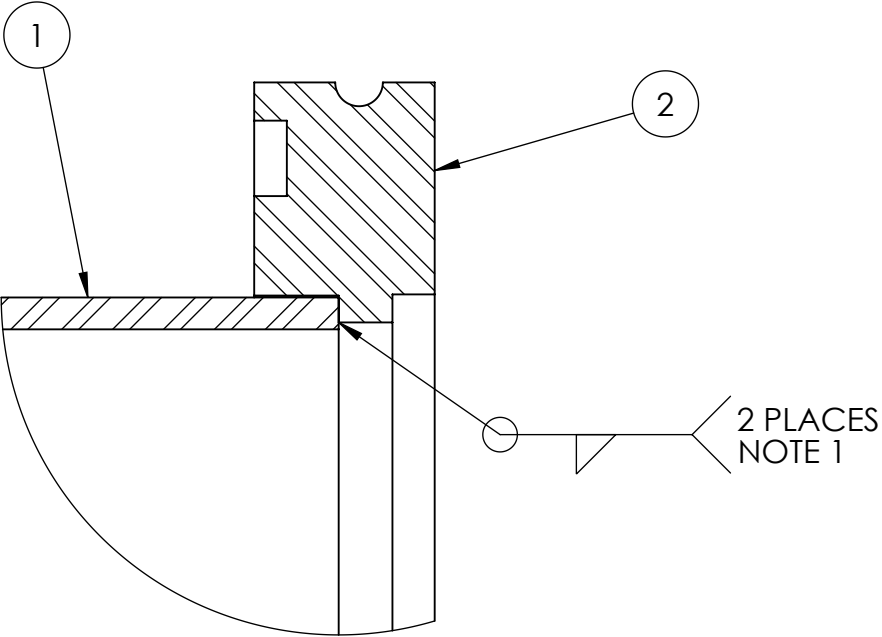
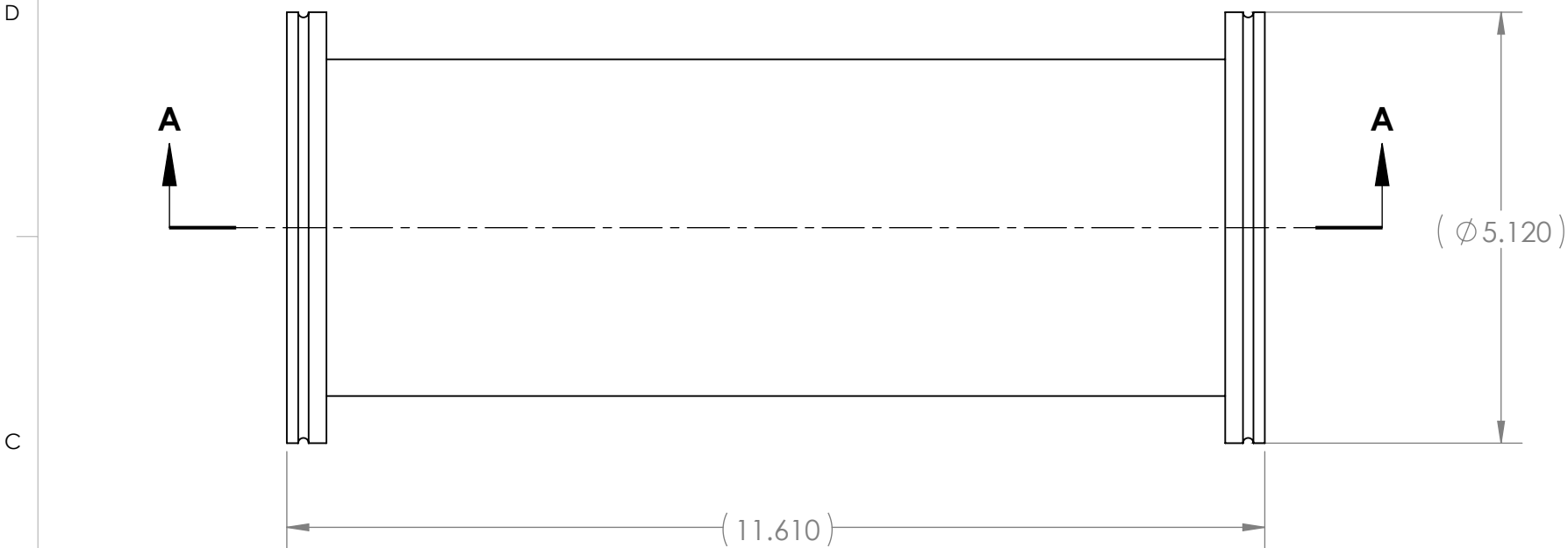
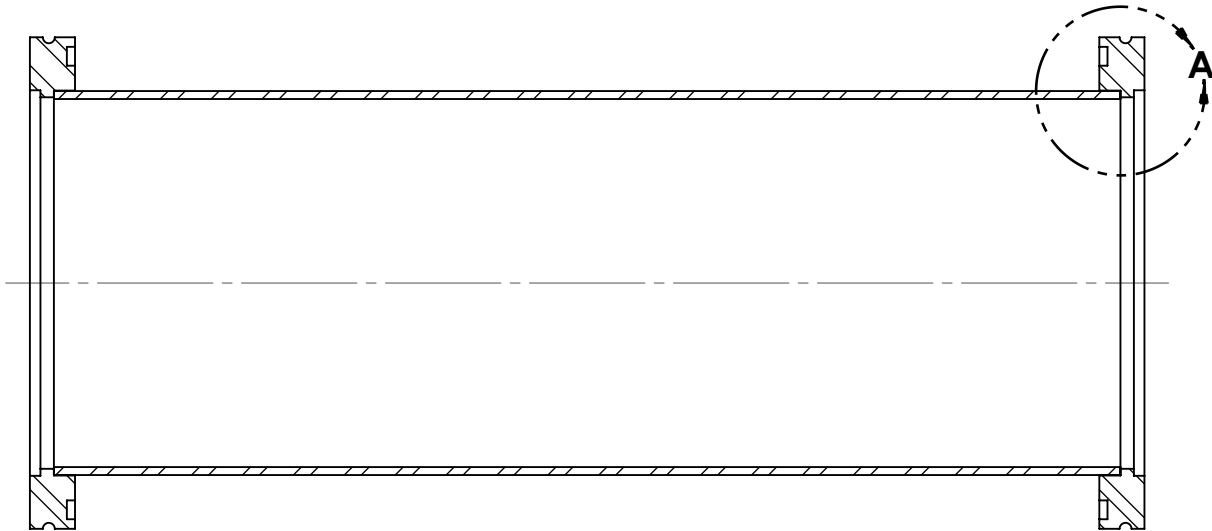


REVISIONS				
REV.	DESCRIPTION	MD WO #	DATE	BY
3	Released	W04047-002	12-MAY-2016	PMG



DETAIL A
SCALE 2 : 1




SECTION A-A

NOTE(S):

- WELD TO BE VACUUM LEAK TIGHT. LEAK RATE TO BE LESS THAN 10^{-8} STD CC/SEC HELIUM.

ITEM NO.	PART NUMBER	DESCRIPTION	MATERIAL	QTY.
1	N3010217-MDE-0001-0074	Tube 'B'	AISI 304	1
2	MDC-813001	ISO LF Flange - NW100, claw-clamp style fastening	AISI 304	2

-	UNLESS OTHERWISE SPECIFIED: DIMENSIONS ARE IN INCHES BREAK ALL SHARP EDGES .02 MAX. REMOVE ALL BURRS 30 Deg. CHAMFER ENDS ALL THREADS MACHINE SURFACE FINISH $\sqrt{63}$		 National Superconducting Cyclotron Laboratory MICHIGAN STATE UNIVERSITY - East Lansing, Michigan	
	DO NOT SCALE DRAWING		DRAWN BY A. SLATIN	
	Project / System Reference Proton Detector Top Assembly		DATE MAY 2016	
N3010217-MDE-0001-0000		Dimension Tolerances	SCALE 1:2	DESCRIPTION Beam Tube
NEXT ASSEMBLY		1 Place Dec. $\pm .030$ 2 Place Dec. $\pm .010$ 3 Place Dec. $\pm .005$ "Stock" $\pm .060$ Angles $\pm .5^\circ$	SIZE B	MATERIAL WELDMENT
		PART # N3010217-MDE-0001-0007		REV 3