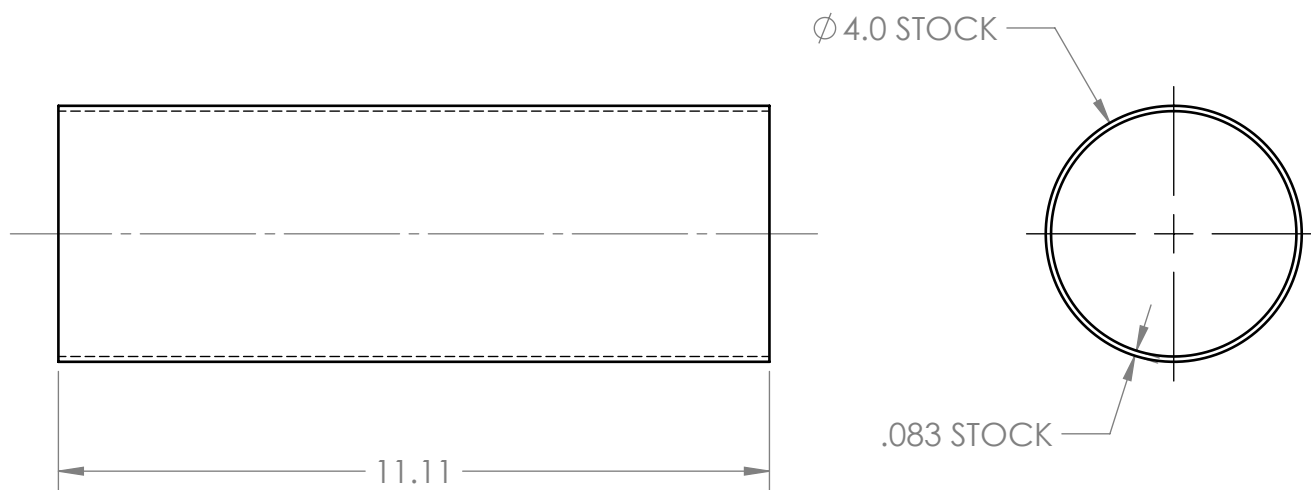
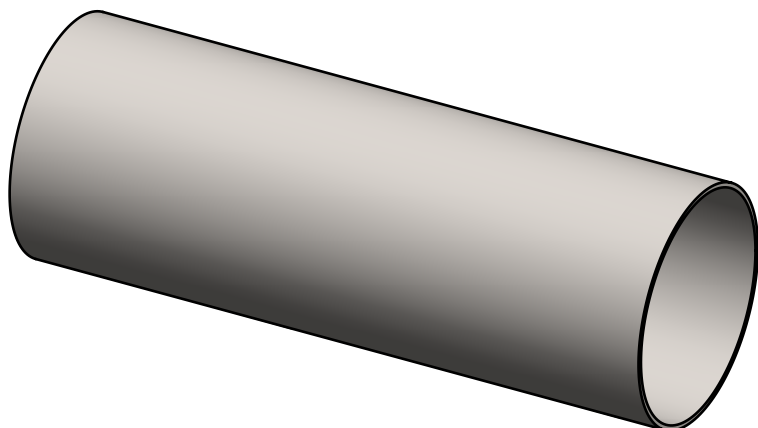



REVISIONS				
REV.	DESCRIPTION	MD WO #	DATE	BY
3	Released	W04047-002	12-MAY-2016	PMG



-	<div>UNLESS OTHERWISE SPECIFIED:</div> <div>DIMENSIONS ARE IN INCHES BREAK ALL SHARP EDGES .02 MAX. REMOVE ALL BURRS 30 Deg. CHAMFER ENDS ALL THREADS MACHINE SURFACE FINISH <math>\sqrt{63}</math></div> <div>DO NOT SCALE DRAWING</div>			<div>National Superconducting Cyclotron Laboratory</div> <div>MICHIGAN STATE UNIVERSITY - East Lansing, Michigan</div>		
-		DRAWN BY	Project / System Reference			
-		A. SLATIN	Proton Detector Top Assembly			
N3010217-MDE-0001-0007	<div>Dimension Tolerances</div> <div>1 Place Dec. ±.030 2 Place Dec. ±.010 3 Place Dec. ±.005 "Stock" ±.060 Angles ±.5°</div>	SCALE	DATE	DESCRIPTION		
NEXT ASSEMBLY		1:3	MAY 2016	Tube 'B'		
		SIZE	MATERIAL	PART #	REV	
		A	AISI 304	N3010217-MDE-0001-0074	3	