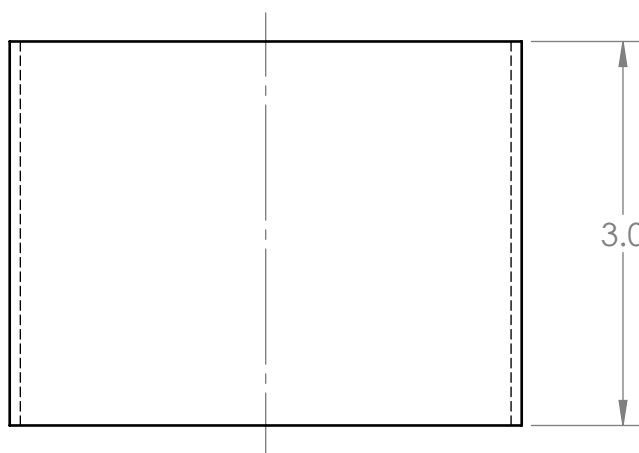
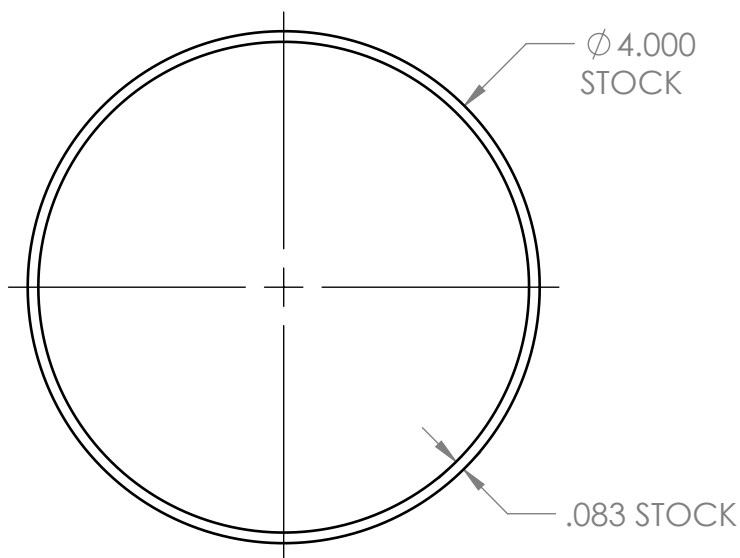
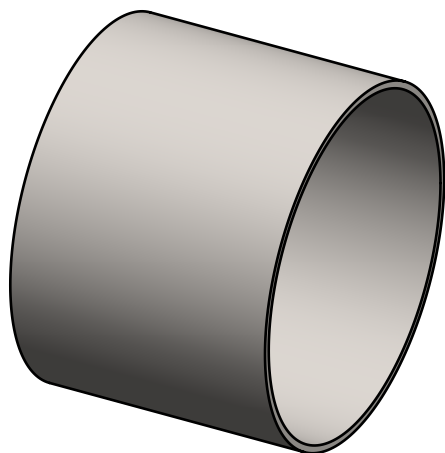
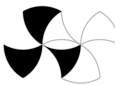


REVISIONS				
REV.	DESCRIPTION	MD WO #	DATE	BY
3	Released	W04047-002	12-MAY-2016	PMG



-	<p>UNLESS OTHERWISE SPECIFIED: DIMENSIONS ARE IN INCHES BREAK ALL SHARP EDGES .02 MAX. REMOVE ALL BURRS 30 Deg. CHAMFER ENDS ALL THREADS MACHINE SURFACE FINISH $\sqrt{63}$</p> <p>DO NOT SCALE DRAWING</p>				 <p>National Superconducting Cyclotron Laboratory MICHIGAN STATE UNIVERSITY - East Lansing, Michigan</p>	
-						
-						
N3010217-MDE-0001-0005	<p>Dimension Tolerances</p> <p>1 Place Dec. $\pm .030$ 2 Place Dec. $\pm .010$ 3 Place Dec. $\pm .005$ "Stock" $\pm .060$ Angles $\pm .5^\circ$</p>	<p>SCALE</p> <p>2:3</p> <p>SIZE</p> <p>A</p>	<p>DATE</p> <p>MAY 2016</p> <p>MATERIAL</p> <p>AISI 304</p>	<p>DESCRIPTION</p> <p>Tube 'A'</p>	<p>PART #</p> <p>N3010217-MDE-0001-0044</p>	<p>REV</p> <p>3</p>
NEXT ASSEMBLY						