

REVISIONS				
REV.	DESCRIPTION	MD WO #	DATE	BY
3	Released	W04047-002	12-MAY-2016	PMG

D

C

B

A

.5 X 45°

6.50

1.50 STOCK

.750 STOCK

2X ϕ .397 ∇ 1.147
TAP FOR 3/8-16 HELICOIL INSERT = 2.0 * DIA.

3.00

1.75

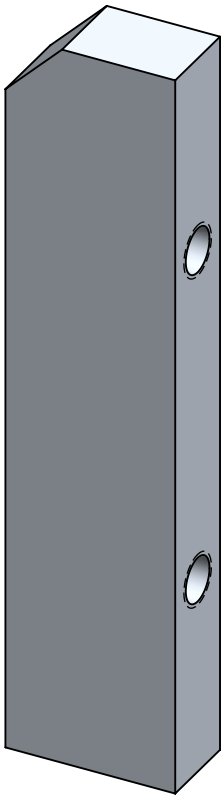
.375

.375

.250

1.000

2X ϕ .266 ∇ .941
TAP FOR 1/4-20 HELICOIL INSERT = 2.0 * DIA.




D

C

B

A

-	<div>UNLESS OTHERWISE SPECIFIED:</div> <div>DIMENSIONS ARE IN INCHES BREAK ALL SHARP EDGES .02 MAX. REMOVE ALL BURRS 30 Deg. CHAMFER ENDS ALL THREADS MACHINE SURFACE FINISH $\sqrt{63}$</div> <div>DO NOT SCALE DRAWING</div>			<i>National Superconducting Cyclotron Laboratory</i> <i>MICHIGAN STATE UNIVERSITY - East Lansing, Michigan</i>		
DRAWN BY A. SLATIN				Project / System Reference Proton Detector Top Assembly		
-		<i>Dimension Tolerances</i>	SCALE 2:3	DATE MAY 2016	DESCRIPTION Upstream End Vertical Mount	
-		1 Place Dec. $\pm.030$ 2 Place Dec. $\pm.010$ 3 Place Dec. $\pm.005$ "Stock" $\pm.060$ Angles $\pm.5^\circ$	SIZE B	MATERIAL 6061-T6 Alum	PART # N3010217-MDE-0001-0067	REV 3
N3010217-MDE-0001-0006						
NEXT ASSEMBLY						