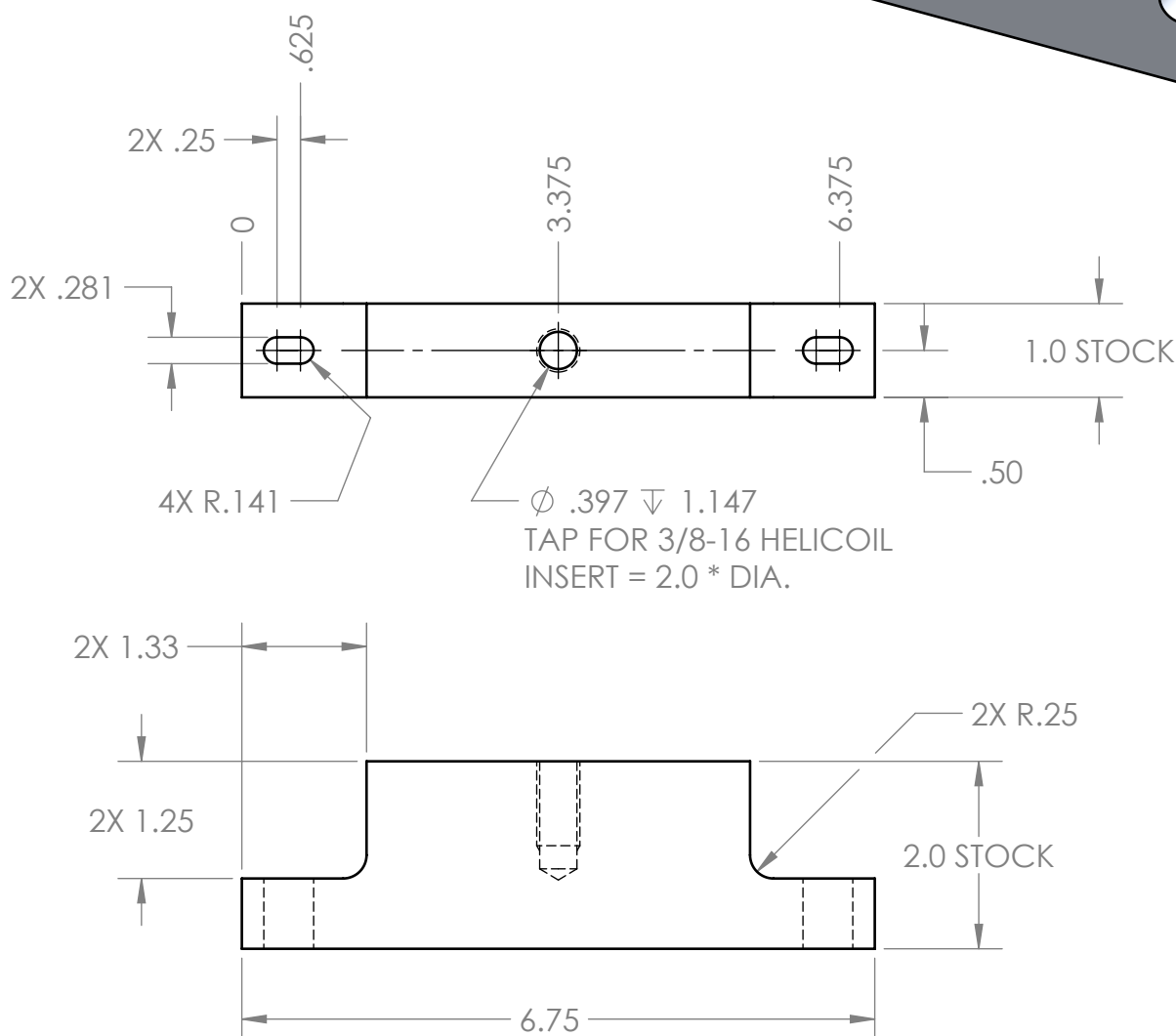
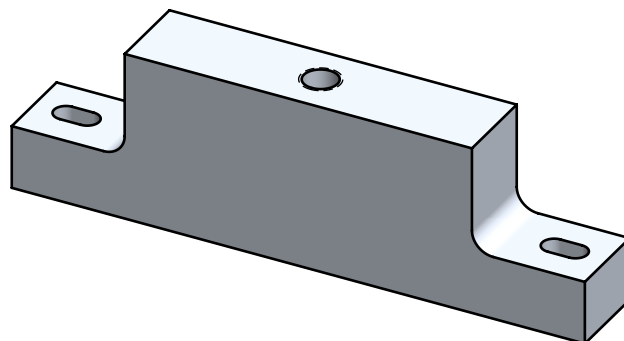



REVISIONS				
REV.	DESCRIPTION	MD WO #	DATE	BY
3	Released	W04047-002	12-MAY-2016	PMG



-	<div>UNLESS OTHERWISE SPECIFIED:</div> <div>DIMENSIONS ARE IN INCHES BREAK ALL SHARP EDGES .02 MAX. REMOVE ALL BURRS 30 Deg. CHAMFER ENDS ALL THREADS MACHINE SURFACE FINISH <math>\sqrt{63}</math></div> <div>DO NOT SCALE DRAWING</div>	<div></div> <div><b>National Superconducting Cyclotron Laboratory</b> MICHIGAN STATE UNIVERSITY - East Lansing, Michigan</div>			
-			DRAWN BY A. SLATIN	Project / System Reference <b>Proton Detector Top Assembly</b>	
-					
N3010217-MDE-0001-0006	<div>Dimension Tolerances</div> <div>1 Place Dec. ±.030 2 Place Dec. ±.010 3 Place Dec. ±.005 "Stock" ±.060 Angles ±.5°</div>	SCALE 1:2	DATE MAY 2016	DESCRIPTION <b>Base Beam Foot</b>	
NEXT ASSEMBLY		SIZE A	MATERIAL 6061-T6 Alum	PART # N3010217-MDE-0001-0062	REV 3