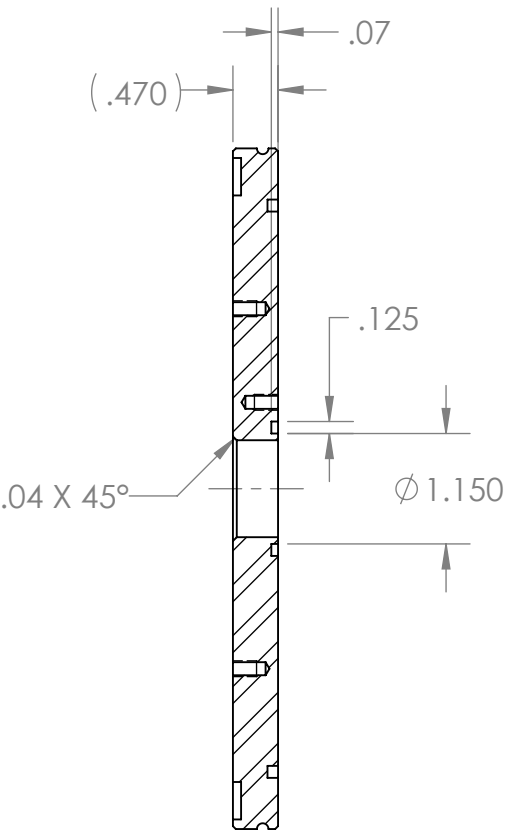
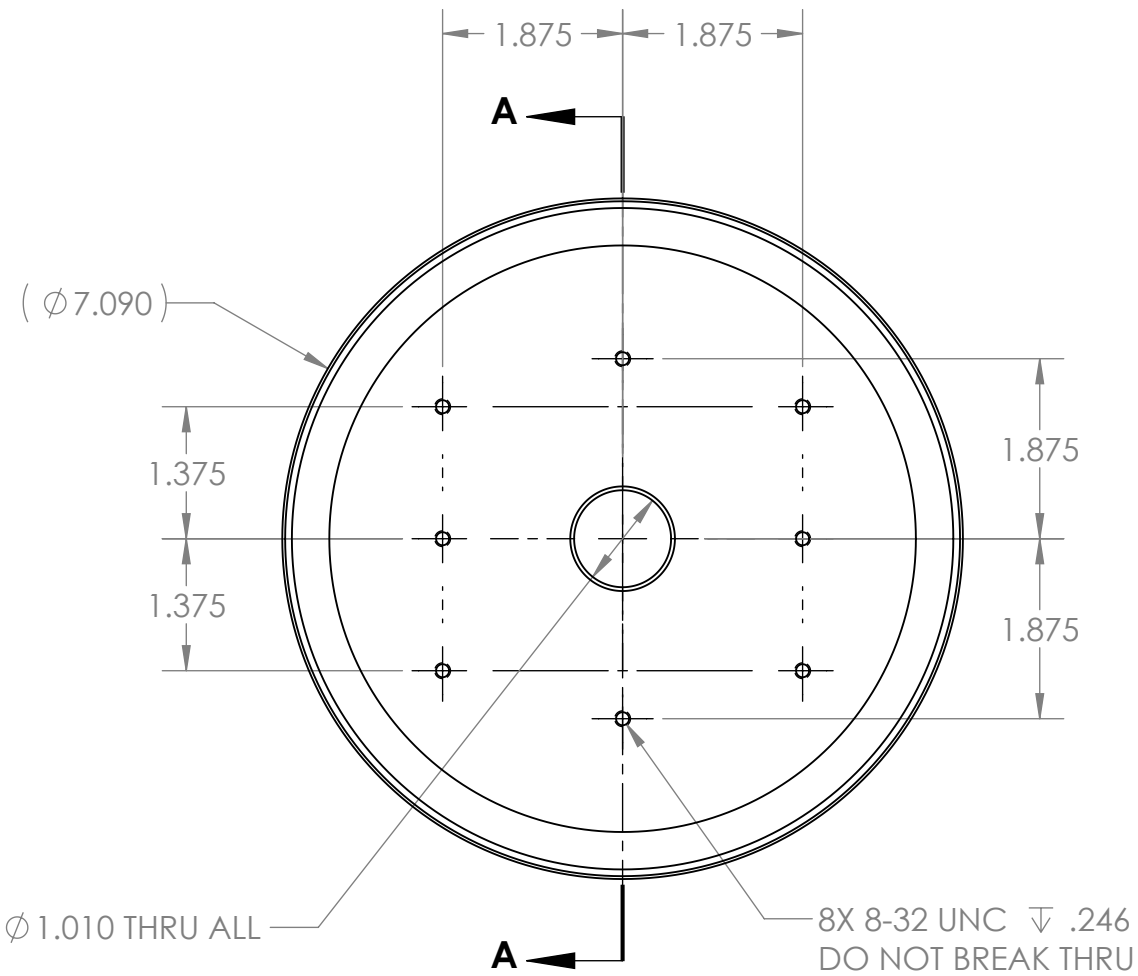
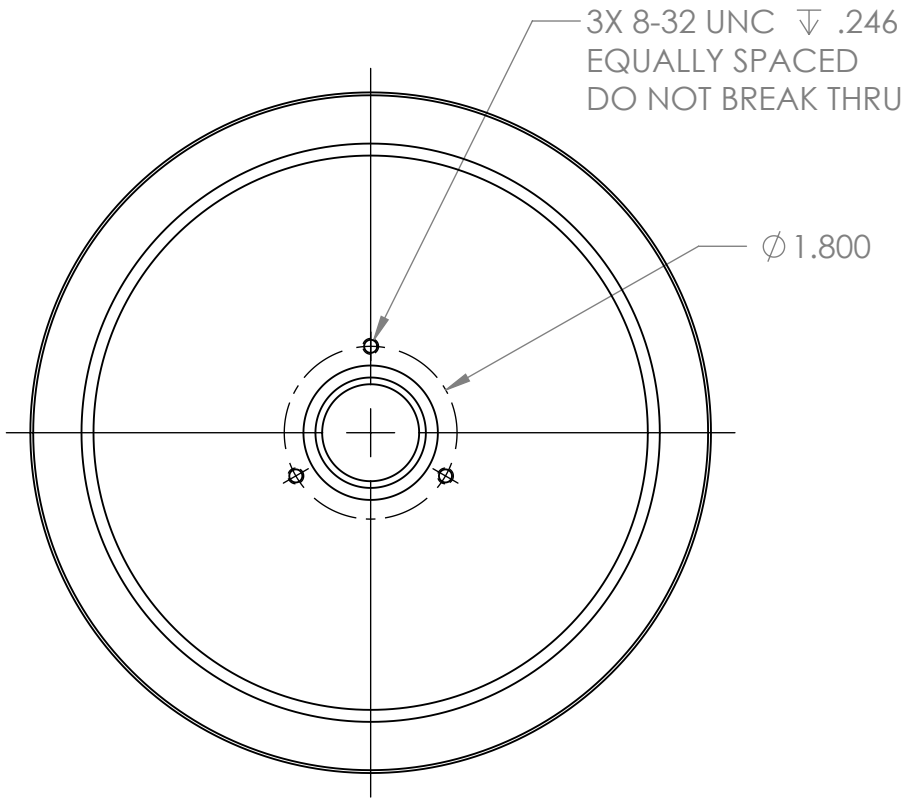


REVISIONS				
REV.	DESCRIPTION	MD WO #	DATE	BY
1	Released	W04047-002	11-MAY-2016	PMG



SECTION A-A



-	UNLESS OTHERWISE SPECIFIED: DIMENSIONS ARE IN INCHES BREAK ALL SHARP EDGES .02 MAX. REMOVE ALL BURRS 30 Deg. CHAMFER ENDS ALL THREADS MACHINE SURFACE FINISH $\sqrt{63}$ DO NOT SCALE DRAWING			
	Dimension Tolerances			
	1 Place Dec. $\pm .030$	SCALE	DATE	DESCRIPTION
	2 Place Dec. $\pm .010$	1:2	MAY 2016	Modified ISO LF Flange
N3010217-MDE-0003-0003	3 Place Dec. $\pm .005$	SIZE	MATERIAL	PART #
	"Stock" $\pm .060$	B	AISI 304	N3010217-MDE-0003-0010
NEXT ASSEMBLY	Angles $\pm .5^\circ$			REV 1



National Superconducting Cyclotron Laboratory
MICHIGAN STATE UNIVERSITY - East Lansing, Michigan

DRAWN BY
A. SLATIN

Project / System Reference
Beam Degradar

DATE
MAY 2016

DESCRIPTION
Modified ISO LF Flange

MATERIAL
AISI 304

PART #
N3010217-MDE-0003-0010

REV
1