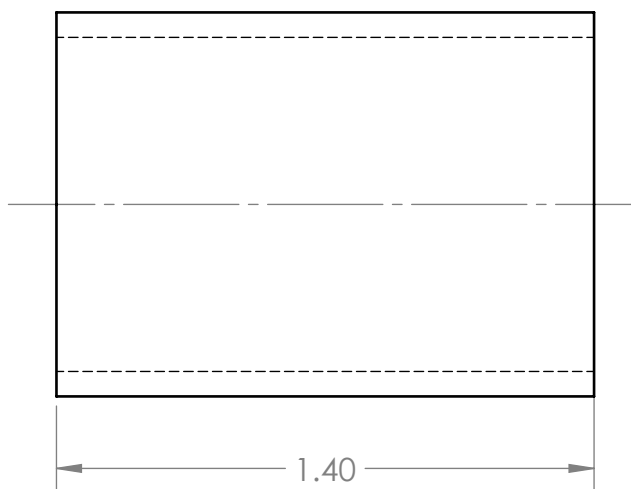
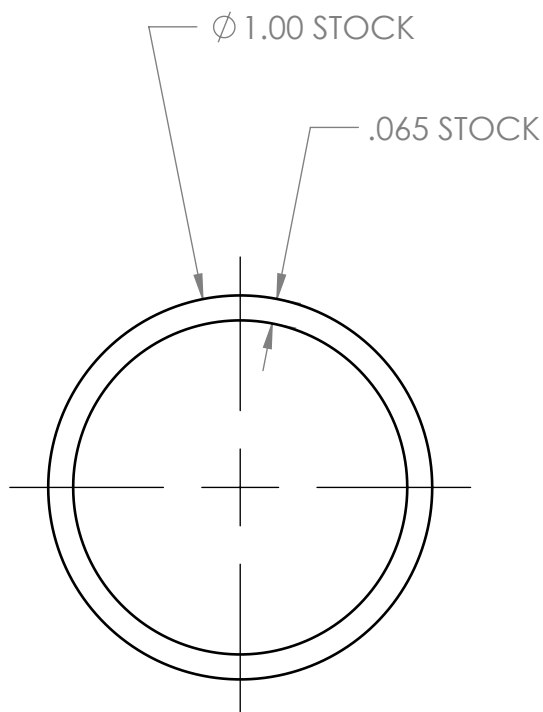
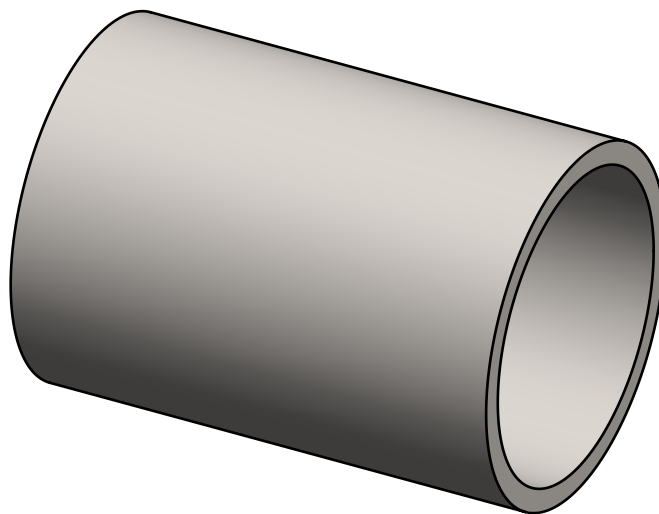
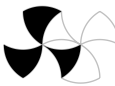


REVISIONS				
REV.	DESCRIPTION	MD WO #	DATE	BY
1	Released	W04047-002	11-MAY-2016	PMG



-	<b>UNLESS OTHERWISE SPECIFIED:</b> DIMENSIONS ARE IN INCHES BREAK ALL SHARP EDGES .02 MAX. REMOVE ALL BURRS 30 Deg. CHAMFER ENDS ALL THREADS MACHINE SURFACE FINISH $\sqrt{63}$ DO NOT SCALE DRAWING		 <b>National Superconducting Cyclotron Laboratory</b> MICHIGAN STATE UNIVERSITY - East Lansing, Michigan	
-				
-				
N3010217-MDE-0003-0003	<b>Dimension Tolerances</b> 1 Place Dec. $\pm .030$ 2 Place Dec. $\pm .010$ 3 Place Dec. $\pm .005$ "Stock" $\pm .060$ Angles $\pm .5^\circ$	SCALE <b>2:1</b>  SIZE <b>A</b>	DATE <b>MAY 2016</b>  MATERIAL <b>AISI 304</b>	Project / System Reference <b>Beam Degradar</b>  DESCRIPTION <b>Tube</b>
NEXT ASSEMBLY	PART # <b>N3010217-MDE-0003-0011</b>		REV <b>1</b>	