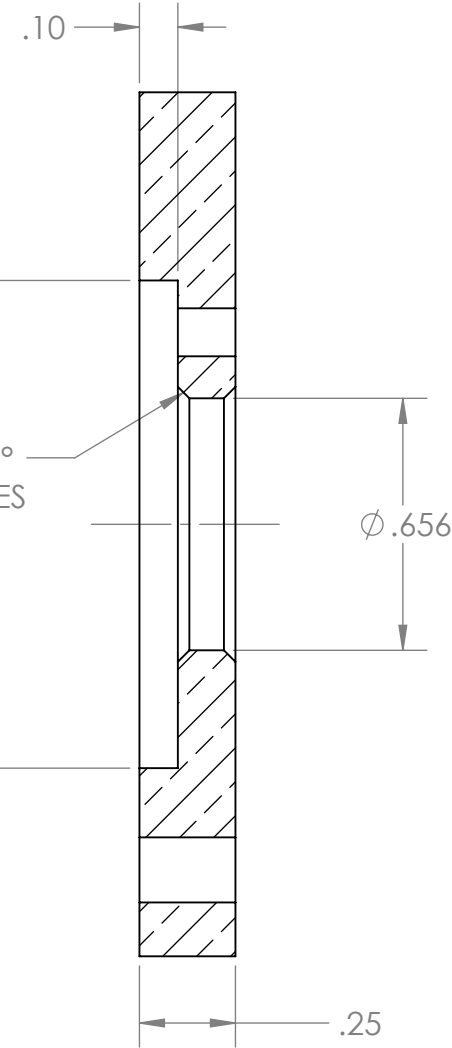



REVISIONS				
REV.	DESCRIPTION	MD WO #	DATE	BY
1	Released	W04047-002	11-MAY-2016	PMG



SECTION A-A

-	<div>UNLESS OTHERWISE SPECIFIED:</div> <div>DIMENSIONS ARE IN INCHES BREAK ALL SHARP EDGES .02 MAX. REMOVE ALL BURRS 30 Deg. CHAMFER ENDS ALL THREADS MACHINE SURFACE FINISH $\sqrt{63}$</div> <div>DO NOT SCALE DRAWING</div>	<div></div> <div><i>National Superconducting Cyclotron Laboratory</i> <i>MICHIGAN STATE UNIVERSITY - East Lansing, Michigan</i></div>			
-					
-		DRAWN BY A. SLATIN	Project / System Reference Beam Degradar		
N3010217-MDE-0003-0002		<div><i>Dimension Tolerances</i></div> <div>1 Place Dec. $\pm .030$ 2 Place Dec. $\pm .010$ 3 Place Dec. $\pm .005$ "Stock" $\pm .060$ Angles $\pm .5^\circ$</div>	SCALE 2:1	DATE MAY 2016	DESCRIPTION Guide Bushing
NEXT ASSEMBLY		SIZE B	MATERIAL Phosphor Bronze (UNS C54400)	PART # N3010217-MDE-0003-0032	REV 1