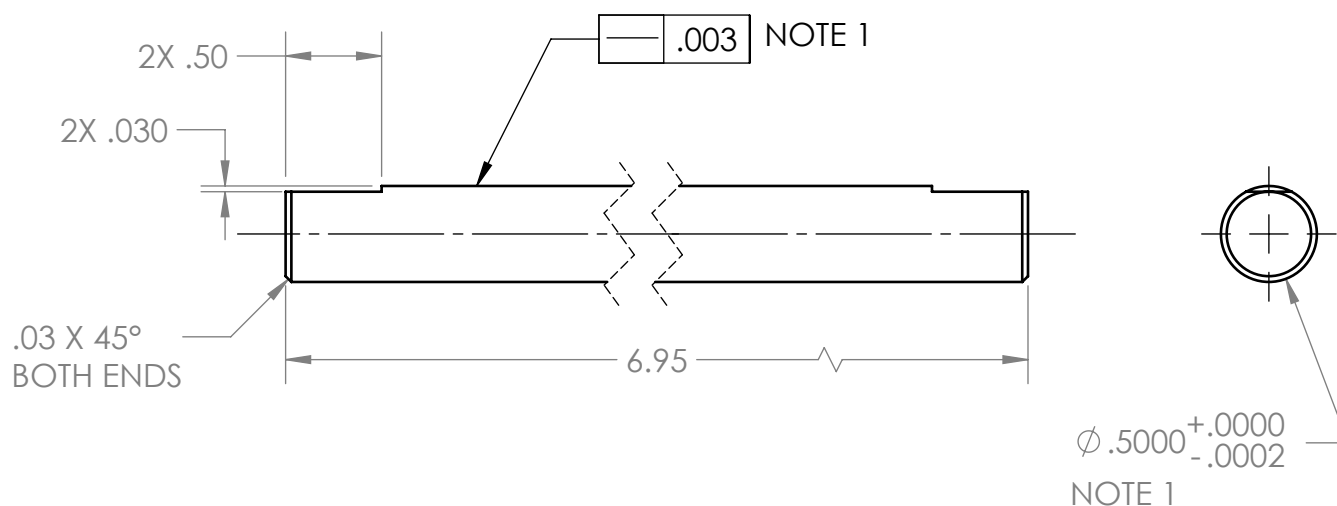
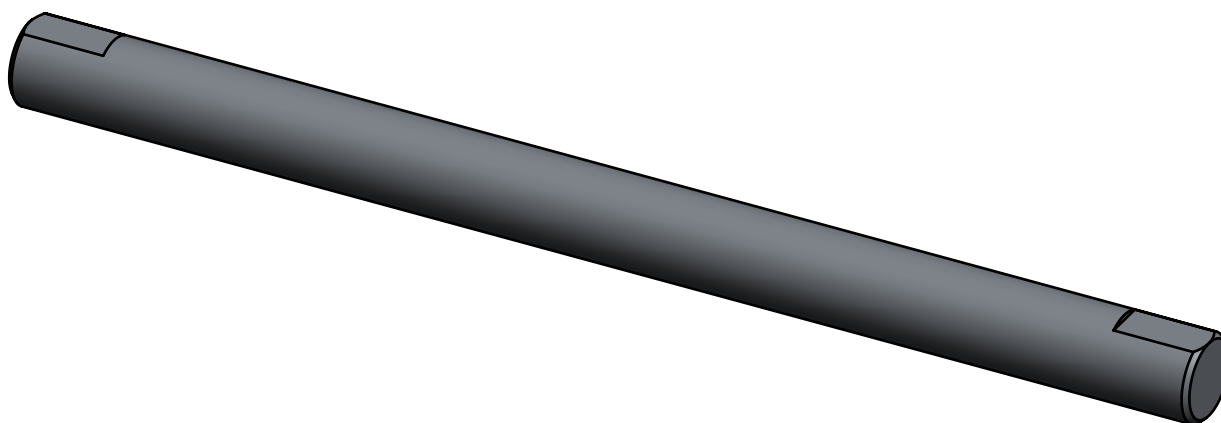



REVISIONS				
REV.	DESCRIPTION	MD WO #	DATE	BY
1	Released	W04047-002	11-MAY-2016	PMG



NOTE(S):

1. MAKE FROM McMASTER-CARR #8364T5 OR EQUIVALENT

-	UNLESS OTHERWISE SPECIFIED:		 <div>National Superconducting Cyclotron Laboratory MICHIGAN STATE UNIVERSITY - East Lansing, Michigan</div>		
-	DIMENSIONS ARE IN INCHES BREAK ALL SHARP EDGES .02 MAX. REMOVE ALL BURRS 30 Deg. CHAMFER ENDS ALL THREADS MACHINE SURFACE FINISH $\sqrt{63}$				
-	DO NOT SCALE DRAWING		DRAWN BY A. SLATIN	Project / System Reference Beam Degradar	
N3010217-MDE-0003-0002	Dimension Tolerances	SCALE 1:1	DATE MAY 2016	DESCRIPTION Guide Shaft	
NEXT ASSEMBLY	1 Place Dec. $\pm .030$ 2 Place Dec. $\pm .010$ 3 Place Dec. $\pm .005$ "Stock" $\pm .060$ Angles $\pm .5^\circ$	SIZE A	MATERIAL AISI 303	PART # N3010217-MDE-0003-0028	REV 1