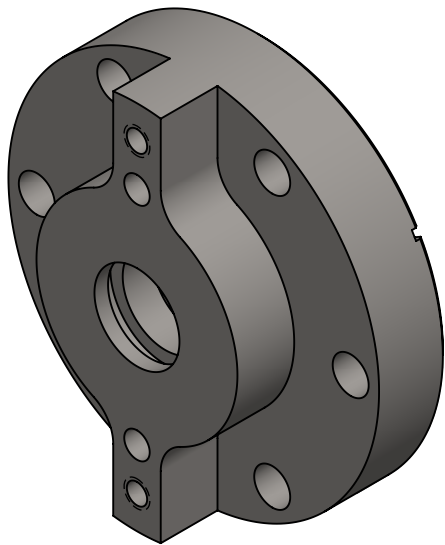
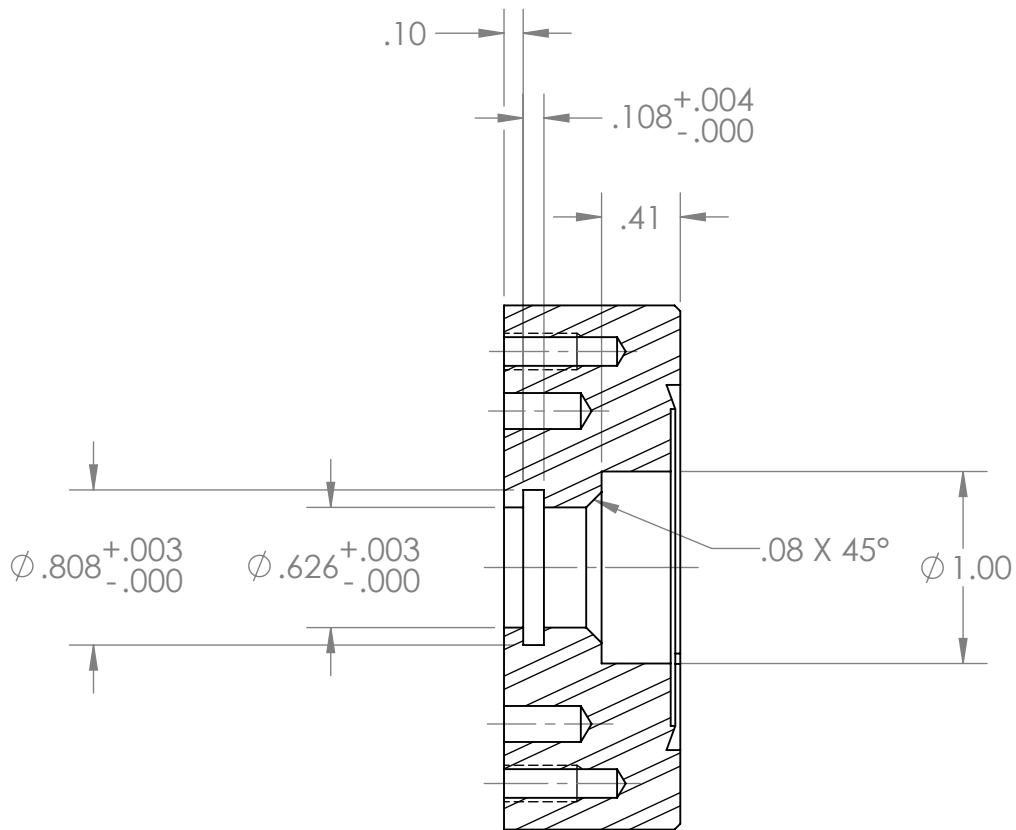
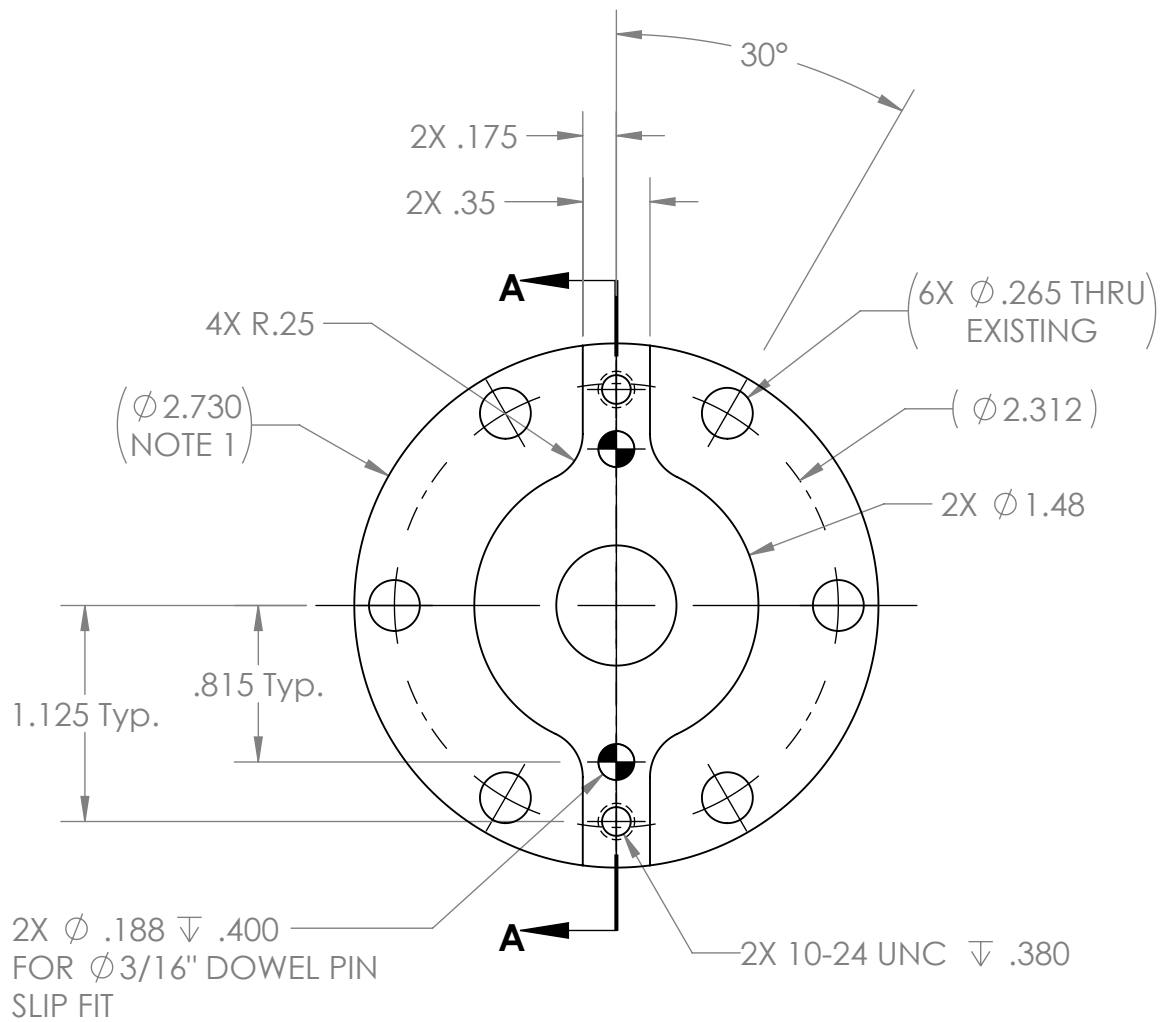
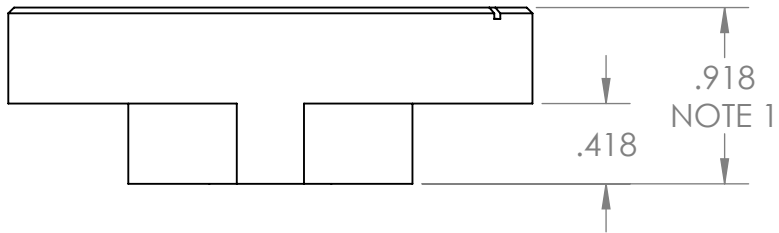



REVISIONS				
REV.	DESCRIPTION	MD WO #	DATE	BY
1	Released	W04047-002	11-MAY-2016	PMG



SECTION A-A

NOTE(S):

1. MAKE FROM MDC # 140043 OR EQUIVALENT DOUBLE-SIDED 2-3/4" CF FLANGE.

-	UNLESS OTHERWISE SPECIFIED: DIMENSIONS ARE IN INCHES BREAK ALL SHARP EDGES .02 MAX. REMOVE ALL BURRS 30 Deg. CHAMFER ENDS ALL THREADS MACHINE SURFACE FINISH $\sqrt{63}$		 National Superconducting Cyclotron Laboratory MICHIGAN STATE UNIVERSITY - East Lansing, Michigan	
	DO NOT SCALE DRAWING		DRAWN BY C. NORAT	Project / System Reference Beam Degradar
	Dimension Tolerances 1 Place Dec. ±.030 2 Place Dec. ±.010 3 Place Dec. ±.005 "Stock" ±.060 Angles ±.5°		DATE MAY 2016	DESCRIPTION Modified Double-Sided CF Flange
	N3010217-MDE-0003-0002		MATERIAL AISI 304	PART # N3010217-MDE-0003-0015
NEXT ASSEMBLY		SCALE 1:1	SIZE B	REV 1