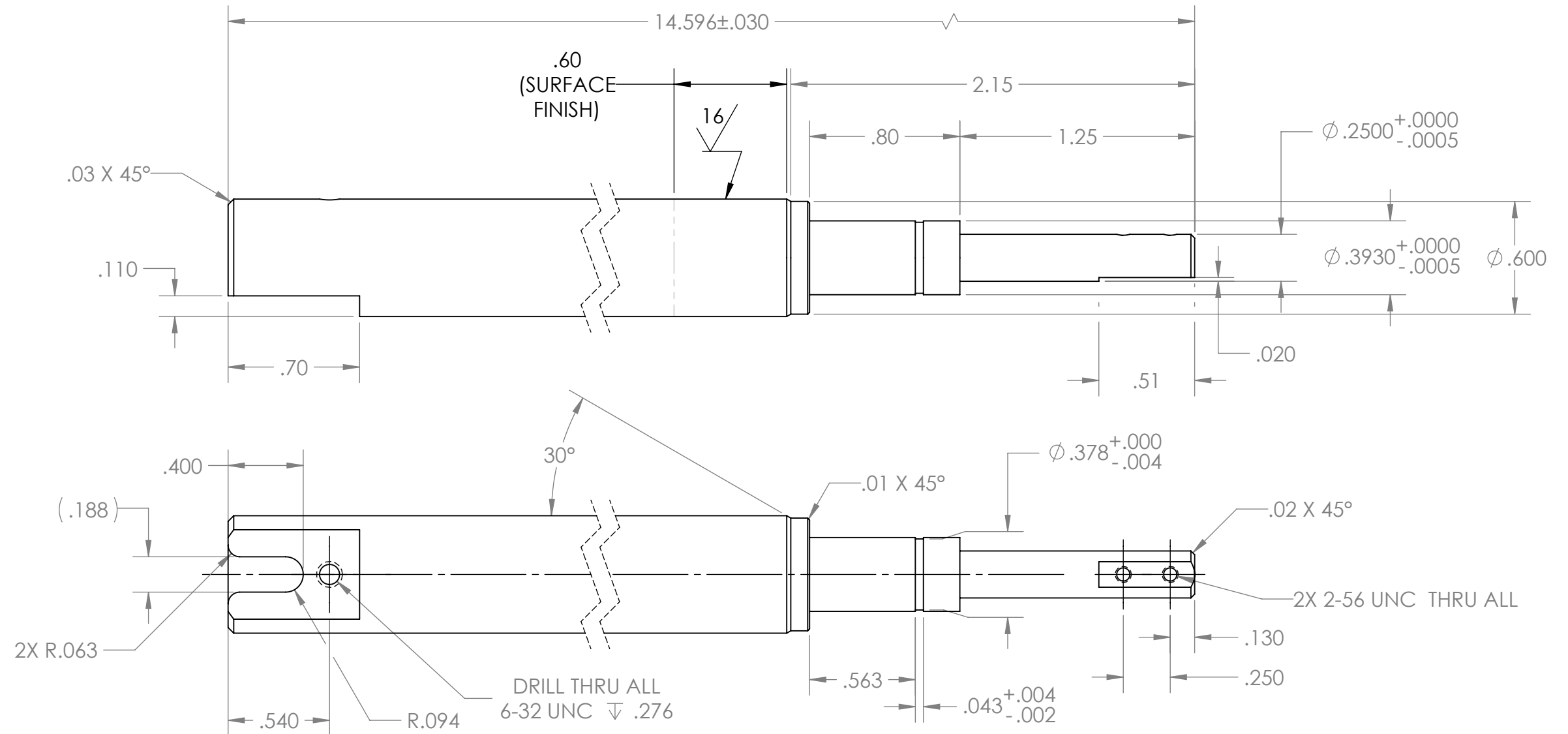
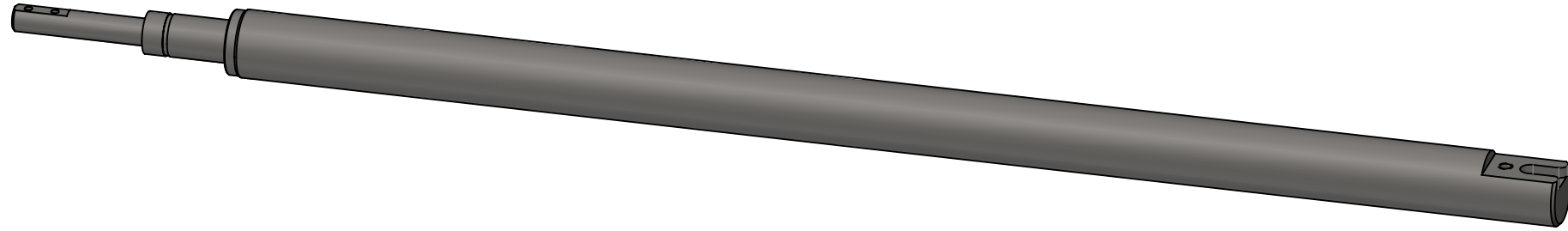



REVISIONS				
REV.	DESCRIPTION	MD WO #	DATE	BY
1	Released	W04047-002	11-MAY-2016	PMG



**NOTE(S):**

1. MAKE FROM McMASTER-CARR #8364T11 OR EQUIVALENT.

-	<div>UNLESS OTHERWISE SPECIFIED:</div> <div>DIMENSIONS ARE IN INCHES BREAK ALL SHARP EDGES .02 MAX. REMOVE ALL BURRS 30 Deg. CHAMFER ENDS ALL THREADS MACHINE SURFACE FINISH <math>\sqrt{63}</math></div> <div>DO NOT SCALE DRAWING</div>			<div>National Superconducting Cyclotron Laboratory</div> <div>MICHIGAN STATE UNIVERSITY - East Lansing, Michigan</div>		
-		DRAWN BY A. SLATIN	Project / System Reference Beam Degradar			
-						
N3010217-MDE-0003-0002	<div>Dimension Tolerances</div> <div>1 Place Dec. ±.030 2 Place Dec. ±.010 3 Place Dec. ±.005 "Stock" ±.060 Angles ±.5°</div>	SCALE 3:2	DATE MAY 2016	DESCRIPTION Drive Shaft 'A'		
NEXT ASSEMBLY		SIZE B	MATERIAL AISI 303	PART # N3010217-MDE-0003-0016	REV 1	