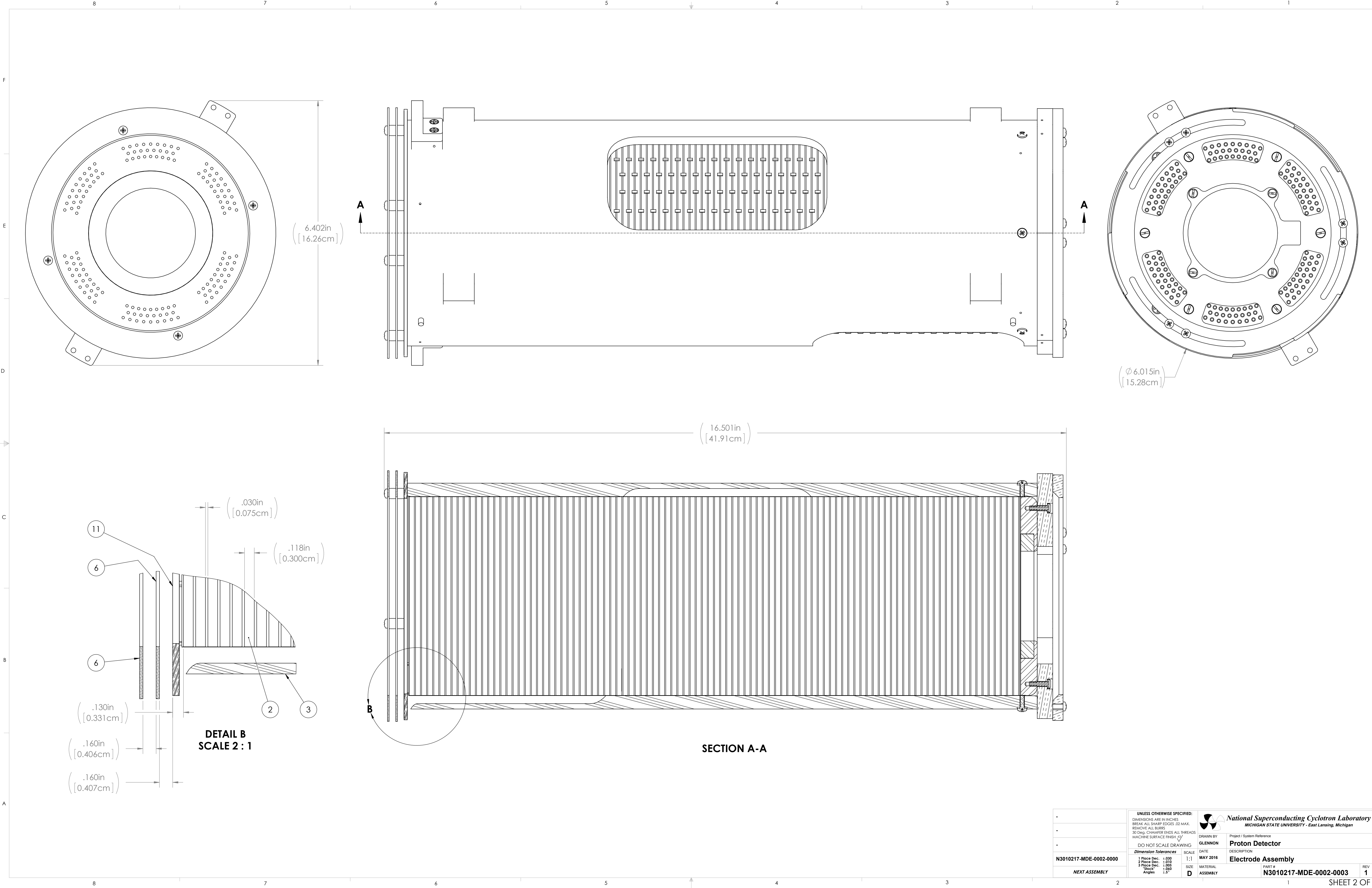
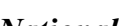


ITEM NO.	PART NUMBER	DESCRIPTION	MATERIAL	QTY.
1	N3010217-MDE-0002-0007	Active Region Window	ASSEMBLY	1
2	N3010217-MDE-0002-0009	Field Cage	SOLDERMENT	1
3	N3010217-MDE-0002-0018	Field Cage Support Structure	Polyetheretherketone (PEEK)	1
4	N3010217-MDE-0002-0019	Cathode	AlSi 304	1
5	N3010217-MDE-0002-0020	Cathode Mount	PEEK 30GF	1
6	N3010217-MDE-0002-0021	Post-Gating Grid Field Ring	COPPER (C110)	2
7	N3010217-MDE-0002-0022	Field Ring Standoff	PEEK 30GF	8
8	N3010217-MDE-0002-0033	Secure-In-Position Tab	PEEK 30GF	2
9	N3010217-MDE-0002-0034	Field Cage Alignment Pin	PEEK 30GF	2
10	N3010217-MDE-0002-0043	Annular Gas Flow Throttling Ring	PEEK 30GF	1
11	N3010217-MDE-0002_GatingGrid	Gating Grid	---	1
12	UC_Components_FS-4xx	UC # FS-404: Slotted Flat Head Screw - vented, #4-40 x 1/4" long	AlSi 304	4
13	UC_Components_PS-4xx	UC # PS-407: Slotted Pan Head Cap Screw - vented, #4-40 x 7/16" long	AlSi 304	6
14	CR-PHMS 0.112-40x0.75x0.5-N-PF	Pan Cross Head, Drive Type Cross, Size #4-40, Length 0.75, Thread Length 0.75	PEEK-GLASS FILLED	4
15	CR-PHMS 0.112-40x0.5x0.5-N-PF	Phillips Drive Pan Head Screw - #4-40 x 1/2" long	PEEK-GLASS FILLED	6
16	CR-PHMS 0.112-40x0.3125x0.3125-N-PF	Pan Cross Head, Drive Type Cross, Size #4-40, Length 0.3125, Thread Length 0.3125	PEEK-GLASS FILLED	6
17	CR-FHMS 0.138-32x0.625x0.625-N-PF	Flat Head Screw (82), Drive Type Cross, Size #6-32, Length 0.625, Thread Length 0.625	PEEK-GLASS FILLED	4
18	CR-FHMS 0.112-40x0.5x0.5-N-PF	Flat Head Screw (82), Drive Type Cross, Size #4-40, Length 0.5, Thread Length 0.5	PEEK-GLASS FILLED	4

-
-
-
N3010217-MDE-0002-0000
<i>NEXT ASSEMBLY</i>



•	UNLESS OTHERWISE SPECIFIED: DIMENSIONS ARE IN INCHES BREAK ALL SHARP EDGES .02 MAX. REMOVE ALL BURRS 30 DEG. CHAMFER ENDS ALL THREADS MACHINE SURFACE FINISH				National Superconducting Cyclotron Laboratory MICHIGAN STATE UNIVERSITY - East Lansing, Michigan		
	DO NOT SCALE DRAWING				Project / System Reference		
	DATE				DESCRIPTION		
	MAY 2016				Electrode Assembly		
N3010217-MDE-0002-0000	DRAWN BY			SIZE	MATERIAL	PART #	REV
	GLENNON						
	DATE						
	MAY 2016						
NEXT ASSEMBLY			ASSEMBLY			N3010217-MDE-0002-0003	