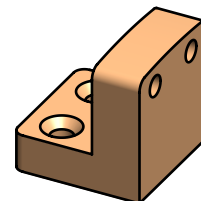
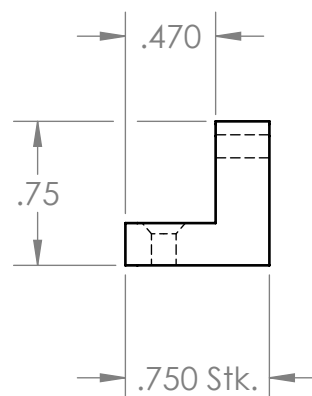
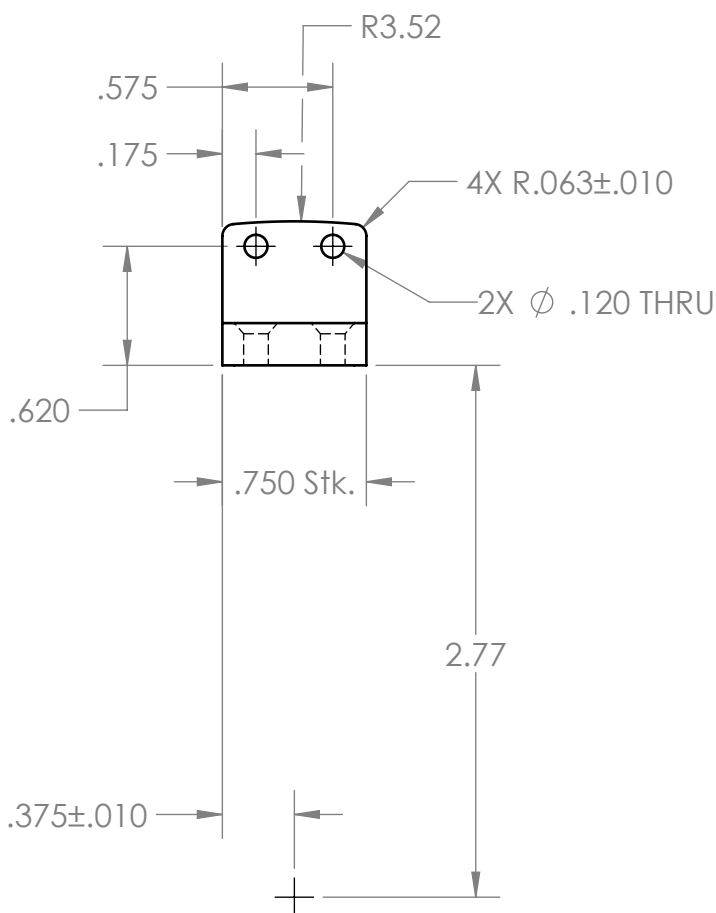
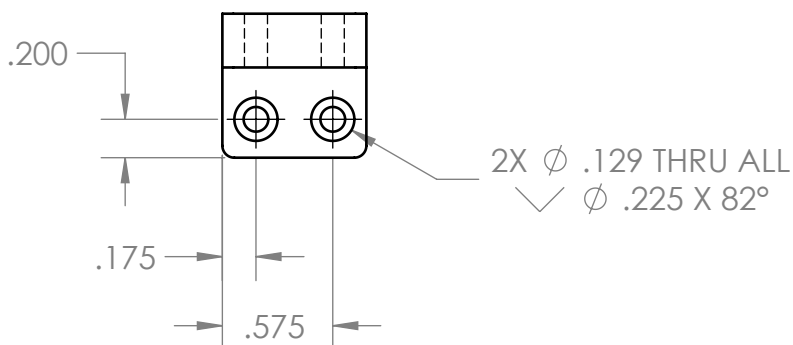



REVISIONS				
REV.	DESCRIPTION	MD WO #	DATE	BY
1	Released	W04047-002	10-MAY-2016	PMG



-	<div>UNLESS OTHERWISE SPECIFIED:</div> <div>DIMENSIONS ARE IN INCHES BREAK ALL SHARP EDGES .02 MAX. REMOVE ALL BURRS 30 Deg. CHAMFER ENDS ALL THREADS MACHINE SURFACE FINISH $\sqrt{63}$</div> <div>DO NOT SCALE DRAWING</div>	 <div>National Superconducting Cyclotron Laboratory</div> <div>MICHIGAN STATE UNIVERSITY - East Lansing, Michigan</div>			
-		DRAWN BY	Project / System Reference		
-		C. NORAT	Proton Detector		
N3010217-MDE-0002-0003	<div>Dimension Tolerances</div> <div>1 Place Dec. ±.030 2 Place Dec. ±.010 3 Place Dec. ±.005 "Stock" ±.060 Angles ±.5°</div>	SCALE 1:1	DATE MAY 2016	DESCRIPTION Secure-In-Position Tab	
NEXT ASSEMBLY		SIZE A	MATERIAL PEEK 30GF	PART # N3010217-MDE-0002-0033	REV 1