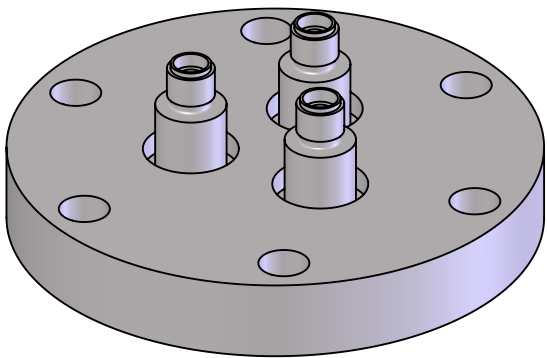
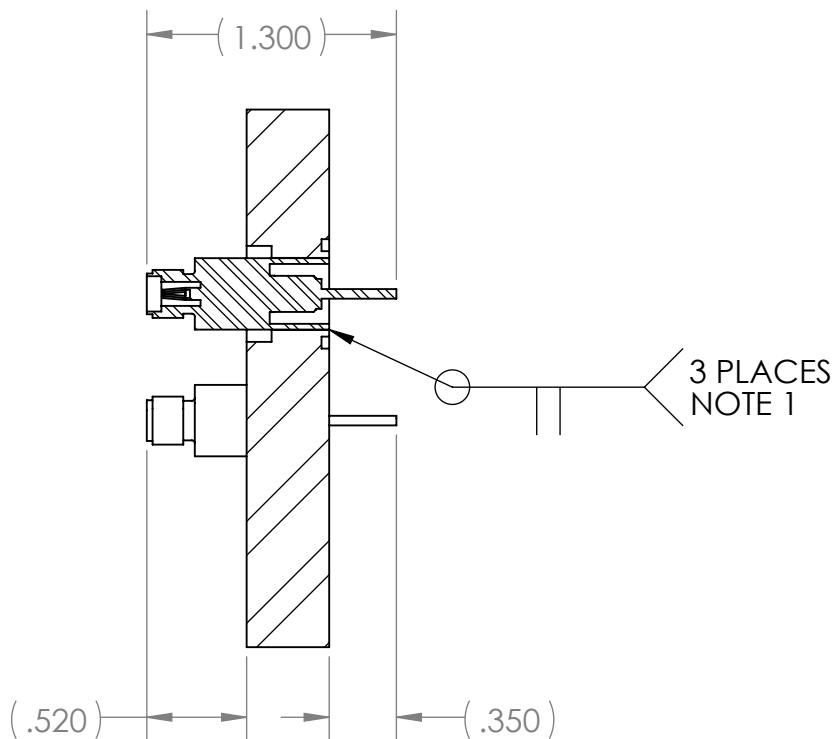
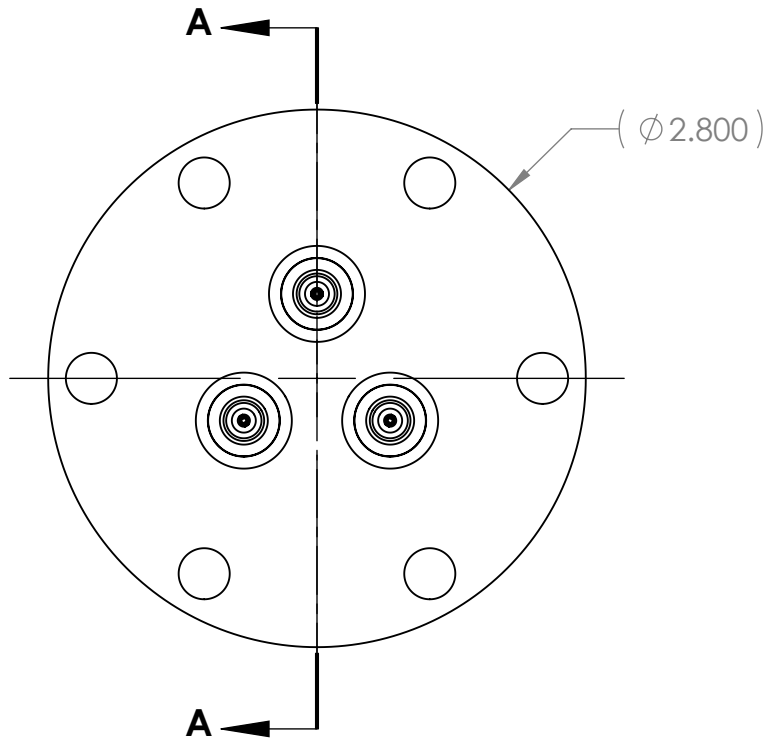


REVISIONS				
REV.	DESCRIPTION	MD WO #	DATE	BY
1	Released	W04047-002	10-MAY-2016	PMG




SECTION A-A

NOTE(S):

1. WELD TO BE VACUUM LEAK TIGHT. LEAK RATE TO BE LESS THAN 10⁻⁸ STD CC/SEC HELIUM.

ITEM NO.	PART NUMBER	DESCRIPTION	MATERIAL	QTY.
1	N3010217-MDE-0002-0028	Custom Feedthrough Flange	AISI 304	1
2	SolidSealingTech-FA25858	Coaxial Electrical Feedthrough - 500 V SMA, 1.8 A, weld mount	---	3

-	UNLESS OTHERWISE SPECIFIED: DIMENSIONS ARE IN INCHES BREAK ALL SHARP EDGES .02 MAX. REMOVE ALL BURRS 30 Deg. CHAMFER ENDS ALL THREADS MACHINE SURFACE FINISH $\sqrt{63}$ DO NOT SCALE DRAWING		 National Superconducting Cyclotron Laboratory MICHIGAN STATE UNIVERSITY - East Lansing, Michigan	
	Dimension Tolerances		SCALE	
N3010217-MDE-0002-0000	1 Place Dec. ±.030 2 Place Dec. ±.010 3 Place Dec. ±.005 "Stock" ±.060 Angles ±.5°		1:1	
NEXT ASSEMBLY	SIZE		B	
		MATERIAL		DATE
		WELDMENT		MAY 2016
		DESCRIPTION		Project / System Reference
		Custom Flange Mount Multi-Feedthrough		Proton Detector
		PART #		REV
		N3010217-MDE-0002-0006		1