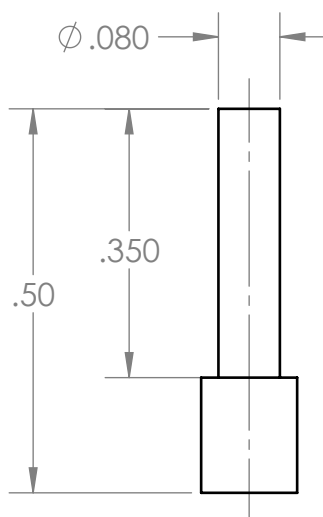
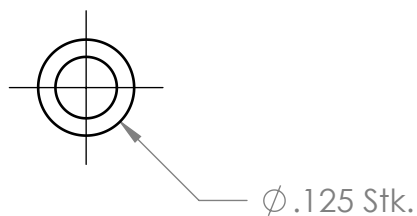
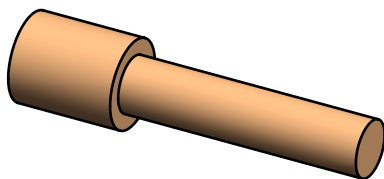



REVISIONS				
REV.	DESCRIPTION	MD WO #	DATE	BY
1	Released	W04047-002	10-MAY-2016	PMG



-	<div>UNLESS OTHERWISE SPECIFIED:</div> <div>DIMENSIONS ARE IN INCHES BREAK ALL SHARP EDGES .02 MAX. REMOVE ALL BURRS 30 Deg. CHAMFER ENDS ALL THREADS MACHINE SURFACE FINISH $\sqrt{63}$</div> <div>DO NOT SCALE DRAWING</div>			<div>National Superconducting Cyclotron Laboratory</div> <div>MICHIGAN STATE UNIVERSITY - East Lansing, Michigan</div>		
-		DRAWN BY	Project / System Reference			
-		C. NORAT	Proton Detector			
N3010217-MDE-0002-0003	<div>Dimension Tolerances</div> <div><div>1 Place Dec. ±.030</div><div>2 Place Dec. ±.010</div><div>3 Place Dec. ±.005</div><div>"Stock" ±.060</div><div>Angles ±.5°</div></div>	SCALE	DATE	DESCRIPTION		
NEXT ASSEMBLY		4:1	MAY 2016	Field Cage Alignment Pin		
		SIZE	MATERIAL	PART #	REV	
		A	PEEK 30GF	N3010217-MDE-0002-0034	1	