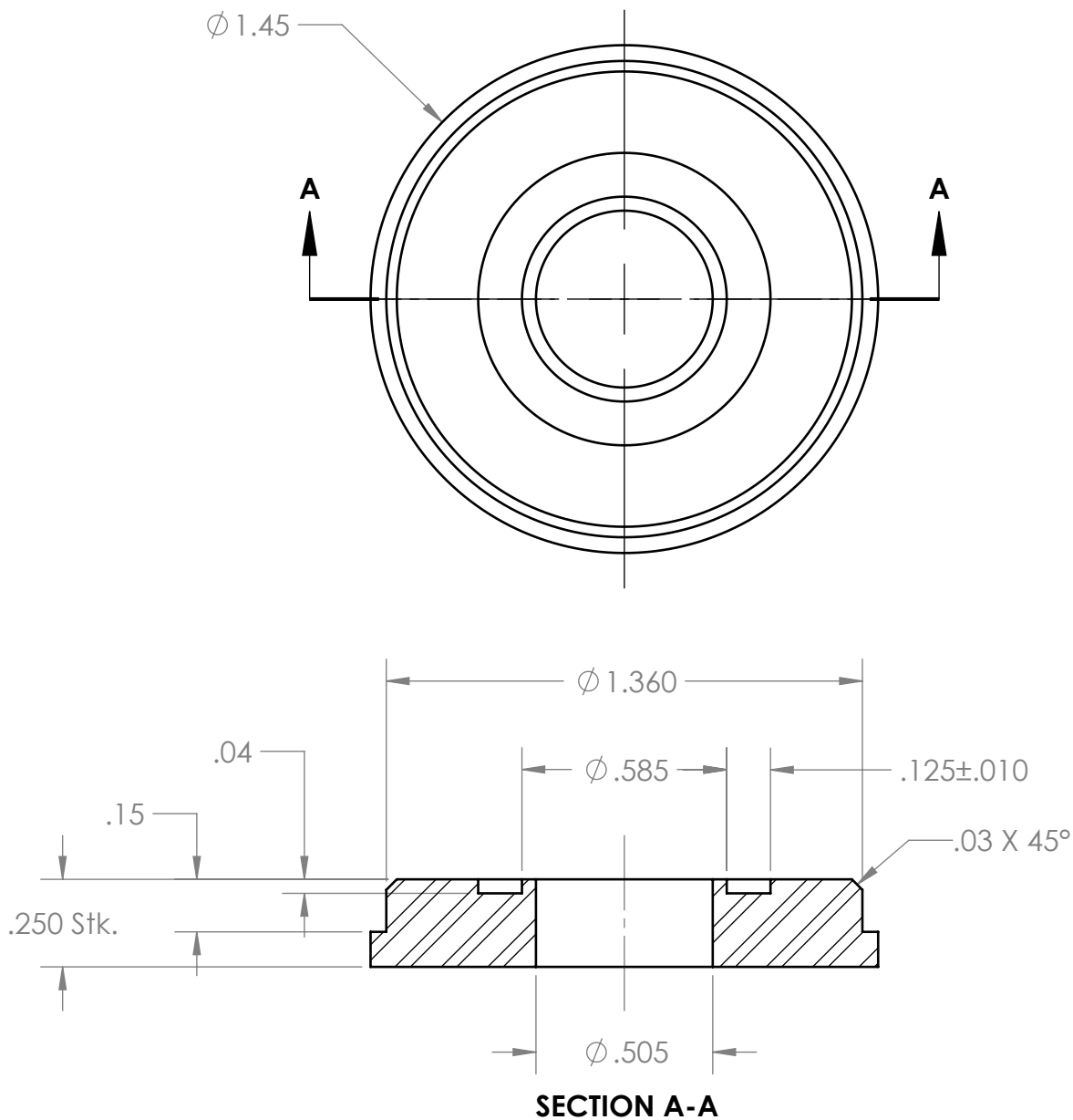



REVISIONS				
REV.	DESCRIPTION	MD WO #	DATE	BY
1	Released	W04047-002	10-MAY-2016	PMG



-	<div>UNLESS OTHERWISE SPECIFIED:</div> <div>DIMENSIONS ARE IN INCHES BREAK ALL SHARP EDGES .02 MAX. REMOVE ALL BURRS 30 Deg. CHAMFER ENDS ALL THREADS MACHINE SURFACE FINISH $\sqrt{63}$</div> <div>DO NOT SCALE DRAWING</div>	 <div>National Superconducting Cyclotron Laboratory</div> <div>MICHIGAN STATE UNIVERSITY - East Lansing, Michigan</div>			
-		DRAWN BY C. NORAT	Project / System Reference Proton Detector		
-					
N3010217-MDE-0002-0002	<div>Dimension Tolerances</div> <div>1 Place Dec. $\pm .030$ 2 Place Dec. $\pm .010$ 3 Place Dec. $\pm .005$ "Stock" $\pm .060$ Angles $\pm .5^\circ$</div>	SCALE 2:1	DATE MAY 2016	DESCRIPTION Weld Adapter 'B'	
NEXT ASSEMBLY		SIZE A	MATERIAL AISI 304	PART # N3010217-MDE-0002-0029	REV 1