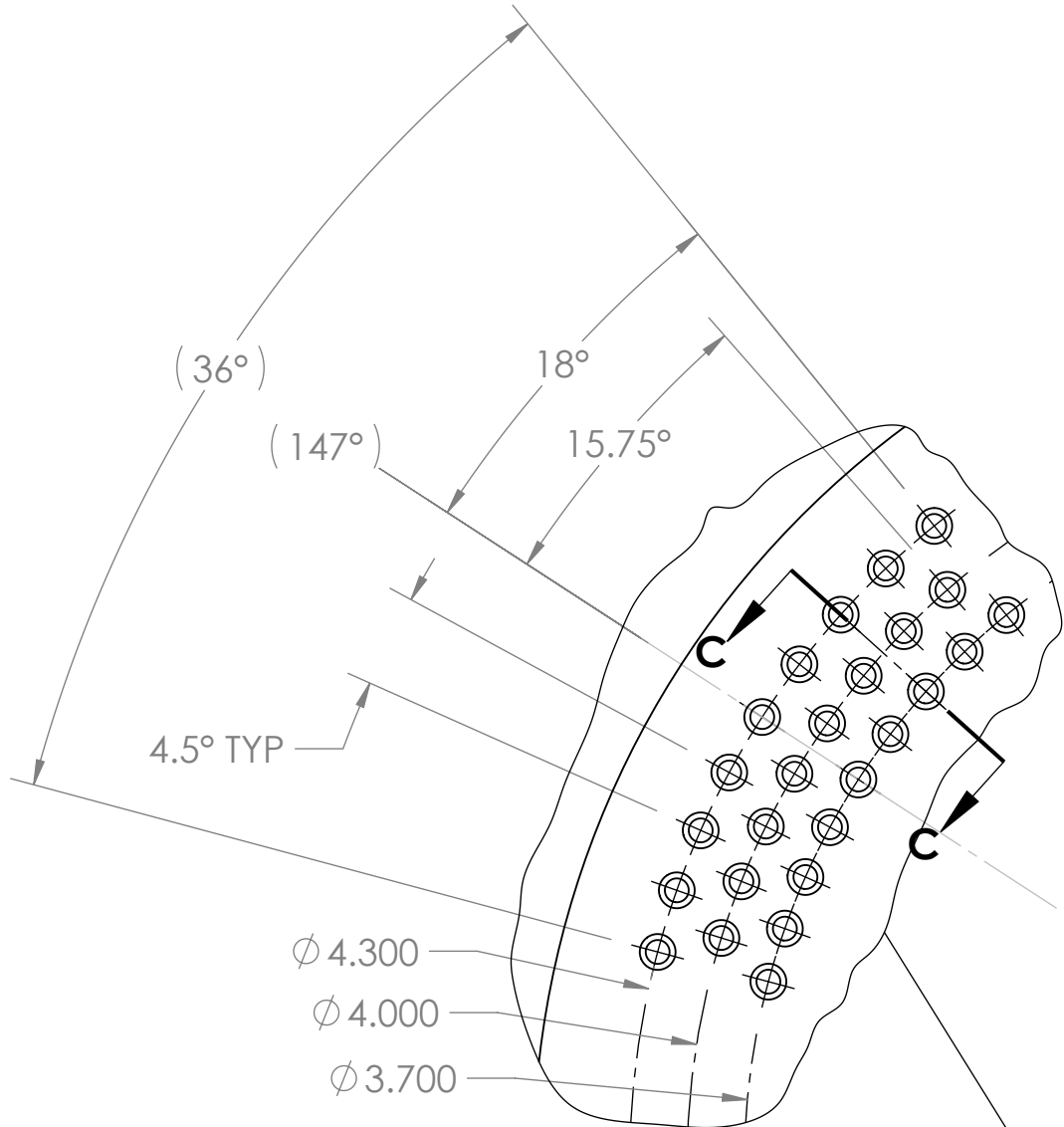
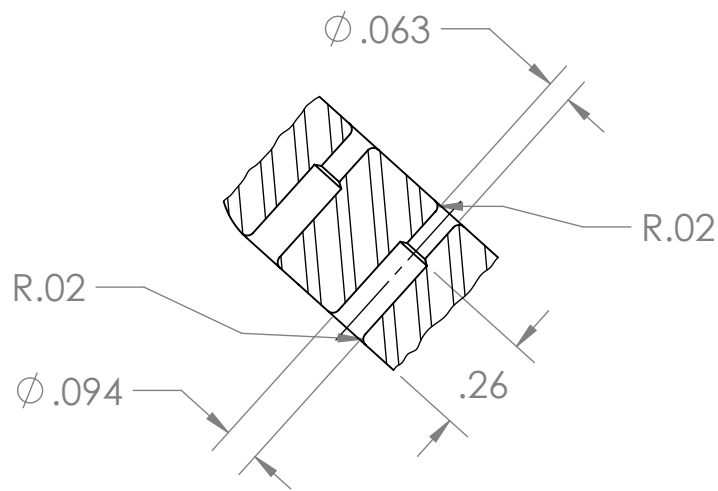


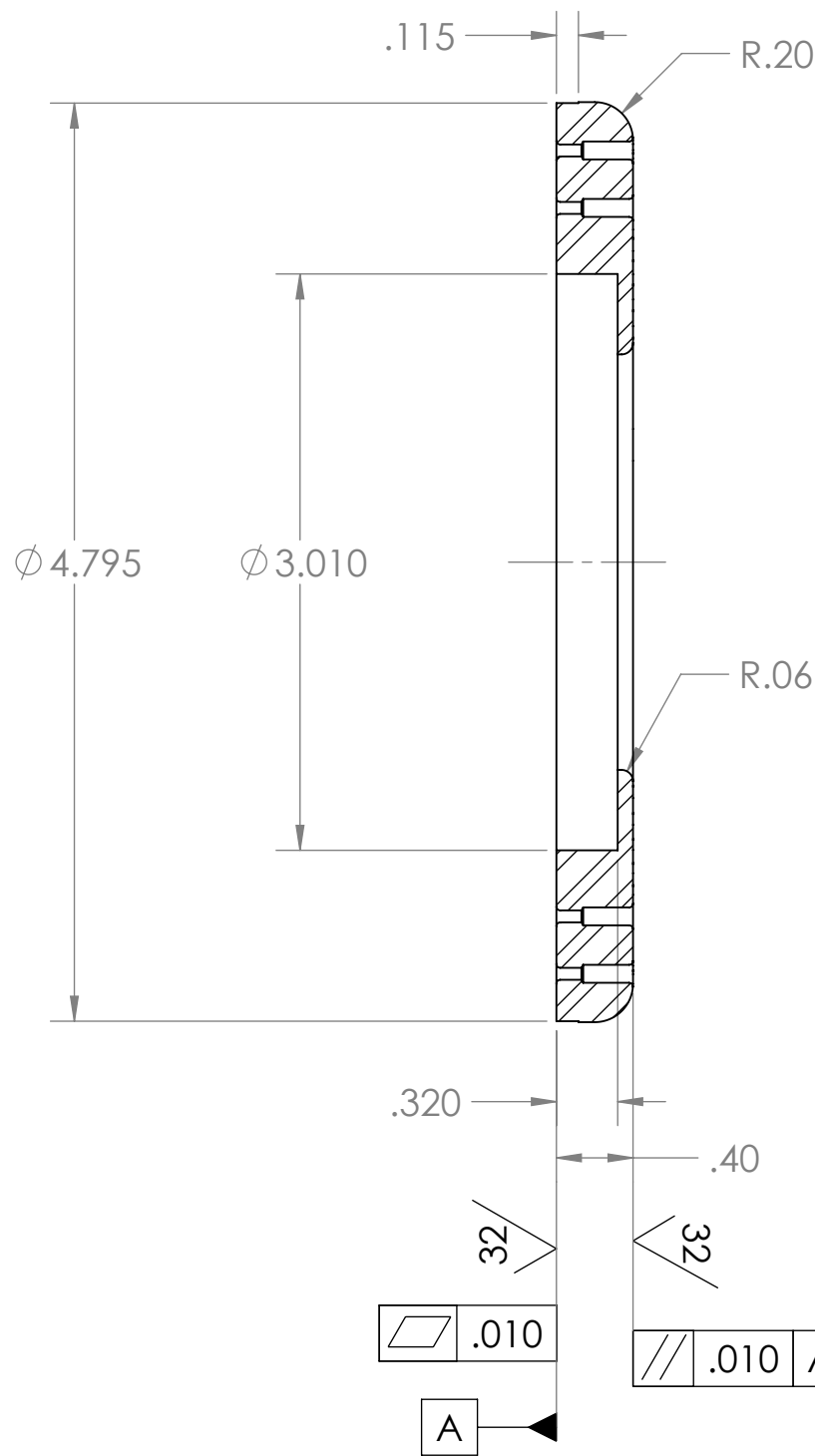
REVISIONS				
REV.	DESCRIPTION	MD WO #	DATE	BY
1	Released	W04047-002	10-MAY-2016	PMG



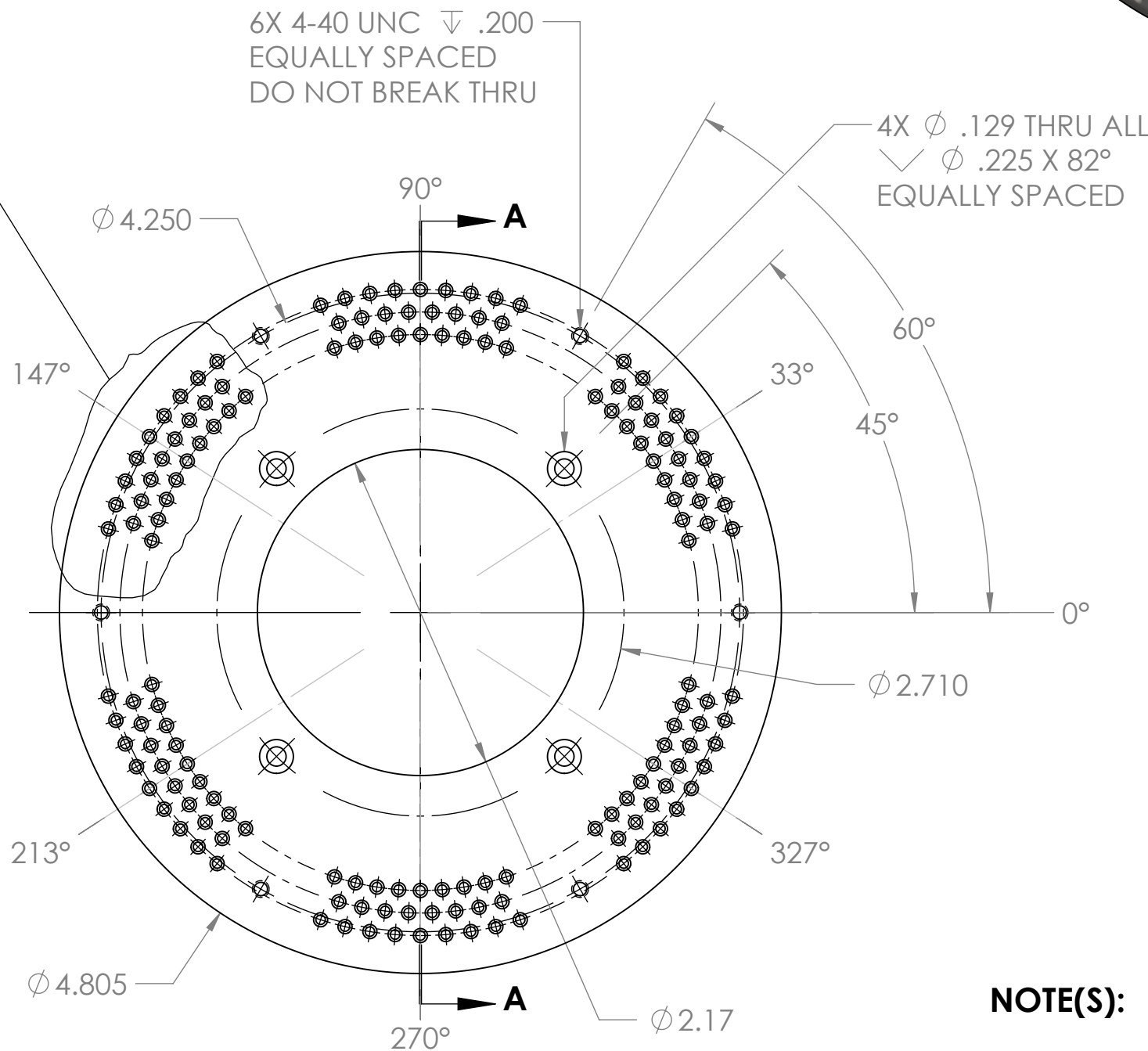
DETAIL B  
SCALE 2 : 1  
PATTERN OF 26 HOLES - TYPICAL  
6 LOCATIONS - NOTE 1



SECTION C-C  
SCALE 2 : 1



SECTION A-A



NOTE(S):

1. SIX HOLE PATTERN LOCATIONS ARE NOT EQUALLY SPACED.

UNLESS OTHERWISE SPECIFIED: DIMENSIONS ARE IN INCHES BREAK ALL SHARP EDGES .02 MAX. REMOVE ALL BURRS 30 Deg. CHAMFER ENDS ALL THREADS MACHINE SURFACE FINISH 63		DO NOT SCALE DRAWING	
Dimension Tolerances		SCALE	1:1
1 Place Dec. ±.030	2 Place Dec. ±.010	DATE	MAY 2016
3 Place Dec. ±.005	"Stock" ±.040	SIZE	C
Angles ±.5°		MATERIAL	AI SI 304
NEXT ASSEMBLY		Project / System Reference	
		C. NORAT	
		Proton Detector	
		Cathode	
		PART #	
		N3010217-MDE-0002-0019	
		REV	
		1	



National Superconducting Cyclotron Laboratory  
MICHIGAN STATE UNIVERSITY - East Lansing, Michigan