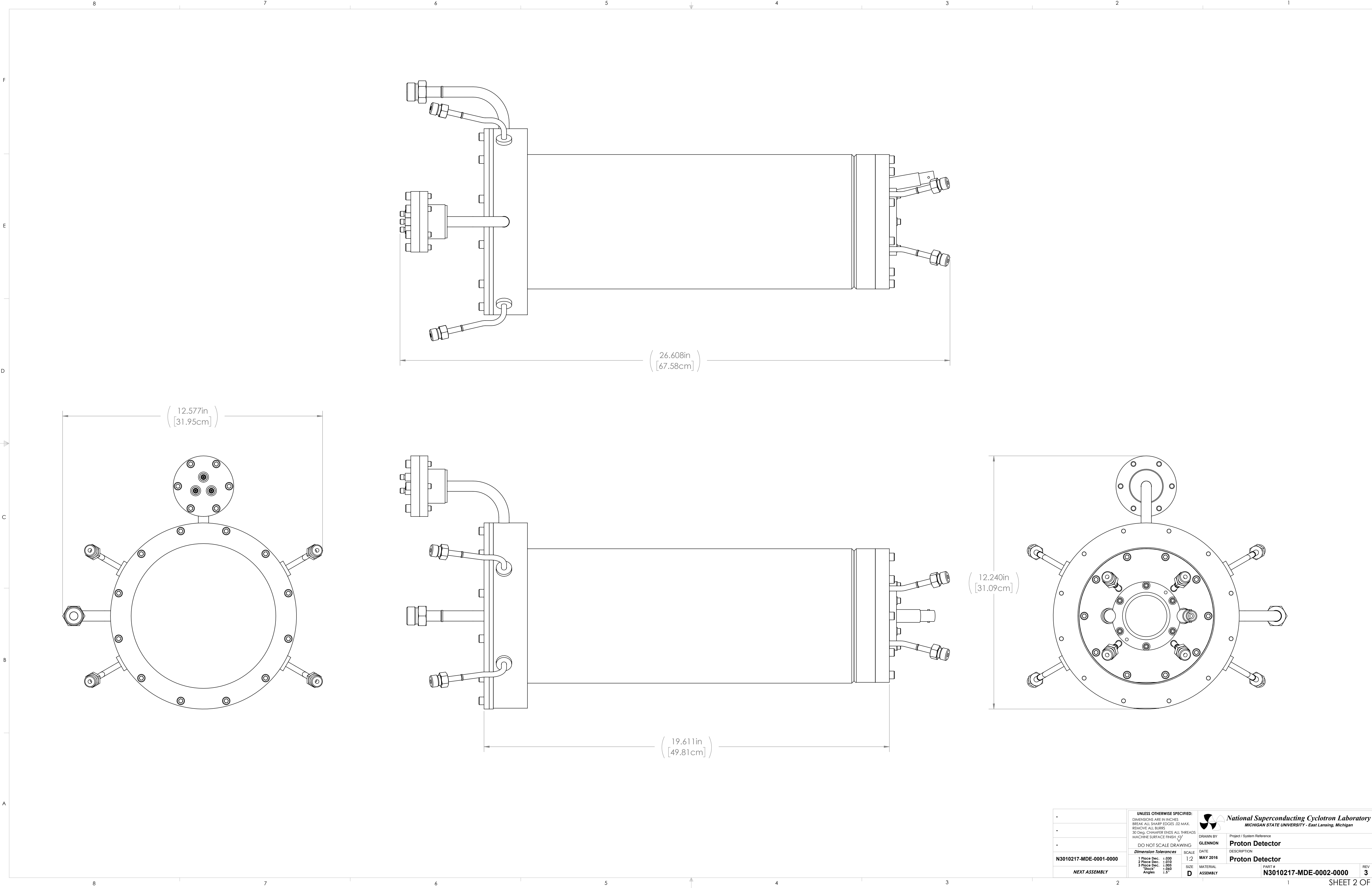


REVISIONS				
REV.	DESCRIPTION	MD WO #	DATE	BY
2	Released	W04047-002	18-AUG-2016	PMG
3	CHANGES TO N3010217-MDE-0002-0003 & 0046.	W04047-002		

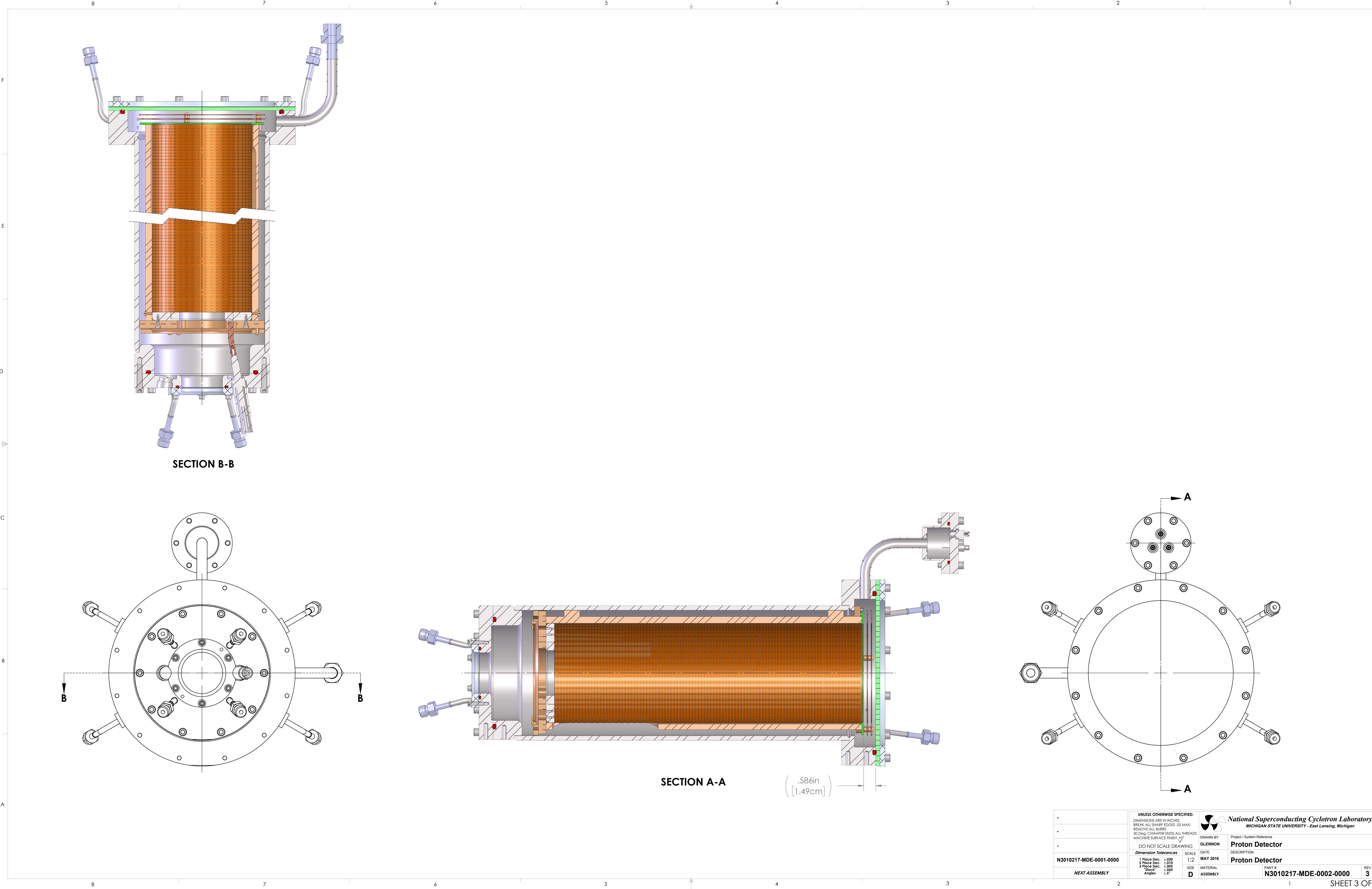
ITEM NO.	PART NUMBER	DESCRIPTION	MATERIAL	QTY.
1	N3010217-MDE-0002-0002	Chamber	WELDMENT	1
2	N3010217-MDE-0002-0003	Electrode Assembly	ASSEMBLY	1
3	N3010217-MDE-0002-0004	Upstream Subassembly	ASSEMBLY	1
4	N3010217-MDE-0002-0006	Custom Flange Mount Multi-Feedthrough	WELDMENT	1
5	N3010217-MDE-0002-0023	Micromegas Board Support Ring	6061-T6 Alum	1
6	N3010217-MDE-0002-0046	Micromegas Board (Envelope)	G-10	1
7	N3010217-MDE-0002_O-Ring	O-Ring - 3/16" W x 5" I.D. (AS568-353)	VITON	1
8	N3010217-MDE-0002_O-Ring	O-Ring - 3/16" W x 7 1/2" I.D. (AS568-367)	VITON	1
9	N3010217-MDE-0002_O-Ring	O-Ring - 1/8" W x 1 3/4" I.D. (AS568-224)	VITON	1
10	HX-SHCS 0.25-20x1.125x1.125-N-SZP	Socket Head Cap Screw, Size 1/4-20, Length 1.125, Thread Length 1.125	STEEL, ZINC PLATED-GRADE 5 MINIMUM	10
11	HX-SHCS 0.25-20x1x1-N-SZP	Hex Socket Head Cap Screw - 1/4"-20 x 1" long	STEEL, ZINC PLATED-GRADE 5 MINIMUM	18
12	UC_Components_C-6xx	UC # C-609: Hex Socket Head Cap Screw - vented, #6-32 x 9/16" long	AISI 304	4


APPROXIMATE WEIGHT: 53.81 LBS

UNLESS OTHERWISE SPECIFIED: DIMENSIONS ARE IN INCHES BREAK ALL SHARP EDGES .02 MAX. REMOVE ALL BURRS 30 Deg. CHAMFER ENDS ALL THREADS MACHINE SURFACE FINISH		National Superconducting Cyclotron Laboratory MICHIGAN STATE UNIVERSITY - East Lansing, Michigan	
DO NOT SCALE DRAWING		DRAWN BY GLENNON	Project / System Reference Proton Detector
DATE MAY 2016		SCALE 1:2	DESCRIPTION Proton Detector
MATERIAL ASSEMBLY		PART # N3010217-MDE-0002-0000	REV 3



<div></div>	UNLESS OTHERWISE SPECIFIED: DIMENSIONS ARE IN INCHES BREAK ALL SHARP EDGES .02 MAX. REMOVE ALL BURRS 30 DEG. CHAMFER ENDS ALL THREADS MACHINE SURFACE FINISH		<div></div>	National Superconducting Cyclotron Laboratory MICHIGAN STATE UNIVERSITY - East Lansing, Michigan	
	DO NOT SCALE DRAWING			Project / Project Reference	
	Dimension Tolerances			Proton Detector	
	1 Place Dec. ±.030 2 Place Dec. ±.010 3 Place Dec. ±.005 "Block" Angles 1.5°			DESCRIPTION Proton Detector	
N3010217-MDE-0001-0000		SCALE 1:2	DATE MAY 2016		
NEXT ASSEMBLY		SIZE D	MATERIAL ASSEMBLY	PART # N3010217-MDE-0002-0000	REV 3



		UNLESS OTHERWISE SPECIFIED: DIMENSIONS ARE IN INCHES BREAK ALL SHARP EDGES .02 MAX. REMOVE ALL BURRS 30 DEG. CHAMFER ENDS ALL THREADS MACHINE SURFACE FINISH			National Superconducting Cyclotron Laboratory MICHIGAN STATE UNIVERSITY - East Lansing, Michigan	
		DO NOT SCALE DRAWING			DRAWN BY GLENNON	Project / System Reference Proton Detector
N3010217-MDE-0001-0000		DATE MAY 2016		DATE MAY 2016	DESCRIPTION Proton Detector	
NEXT ASSEMBLY		SCALE 1:2		MATERIAL D	PART # N3010217-MDE-0002-0000	
		SIZE D		ASSEMBLY	REV 3	
		Angles 1.5°				