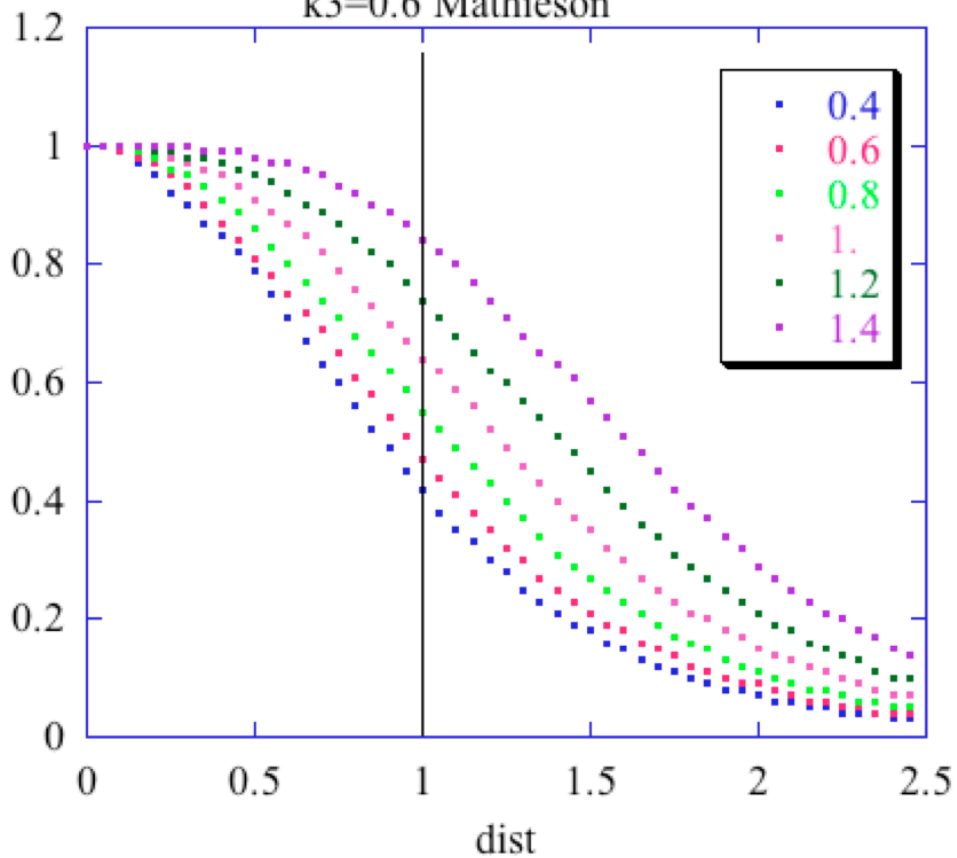
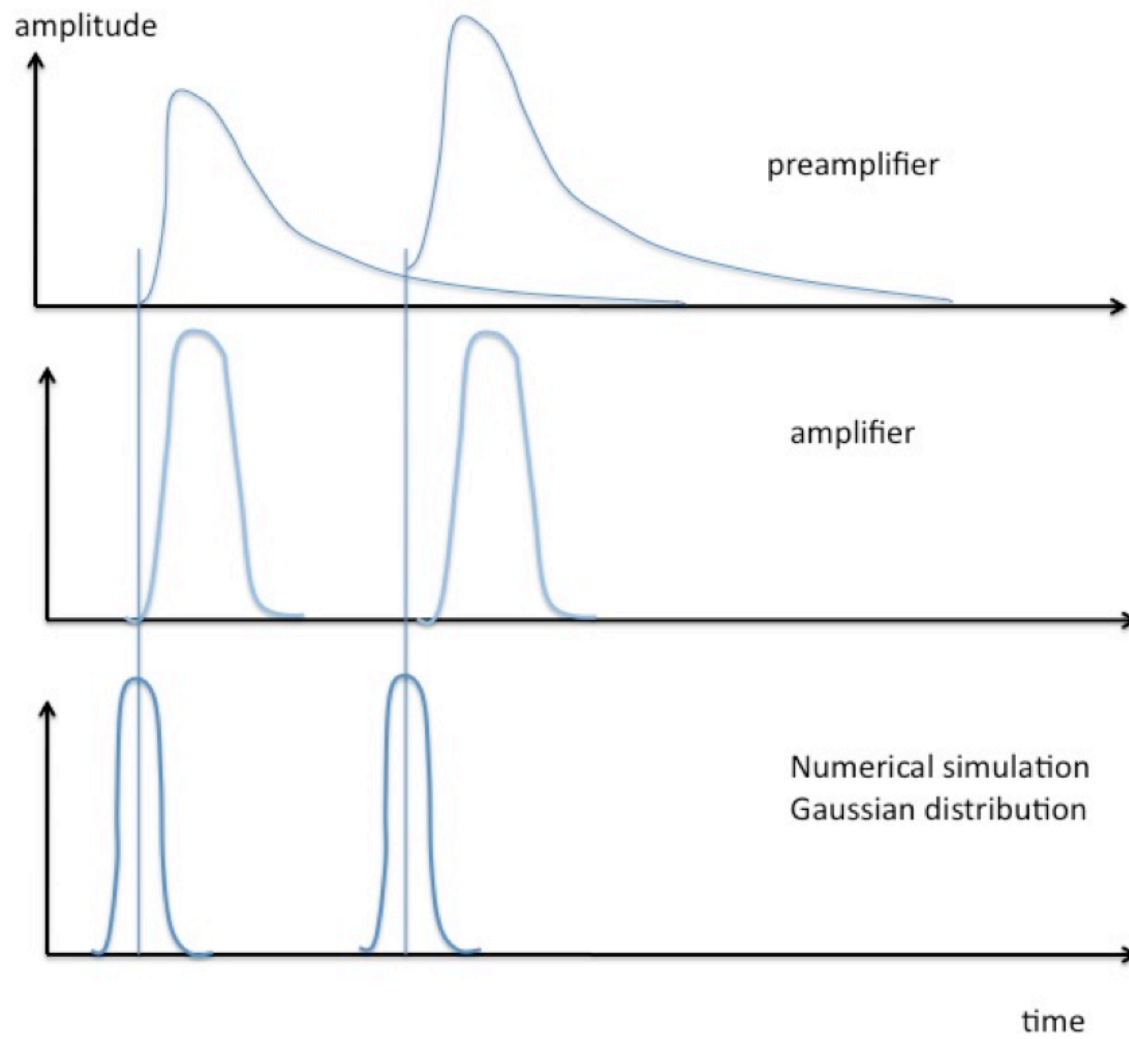


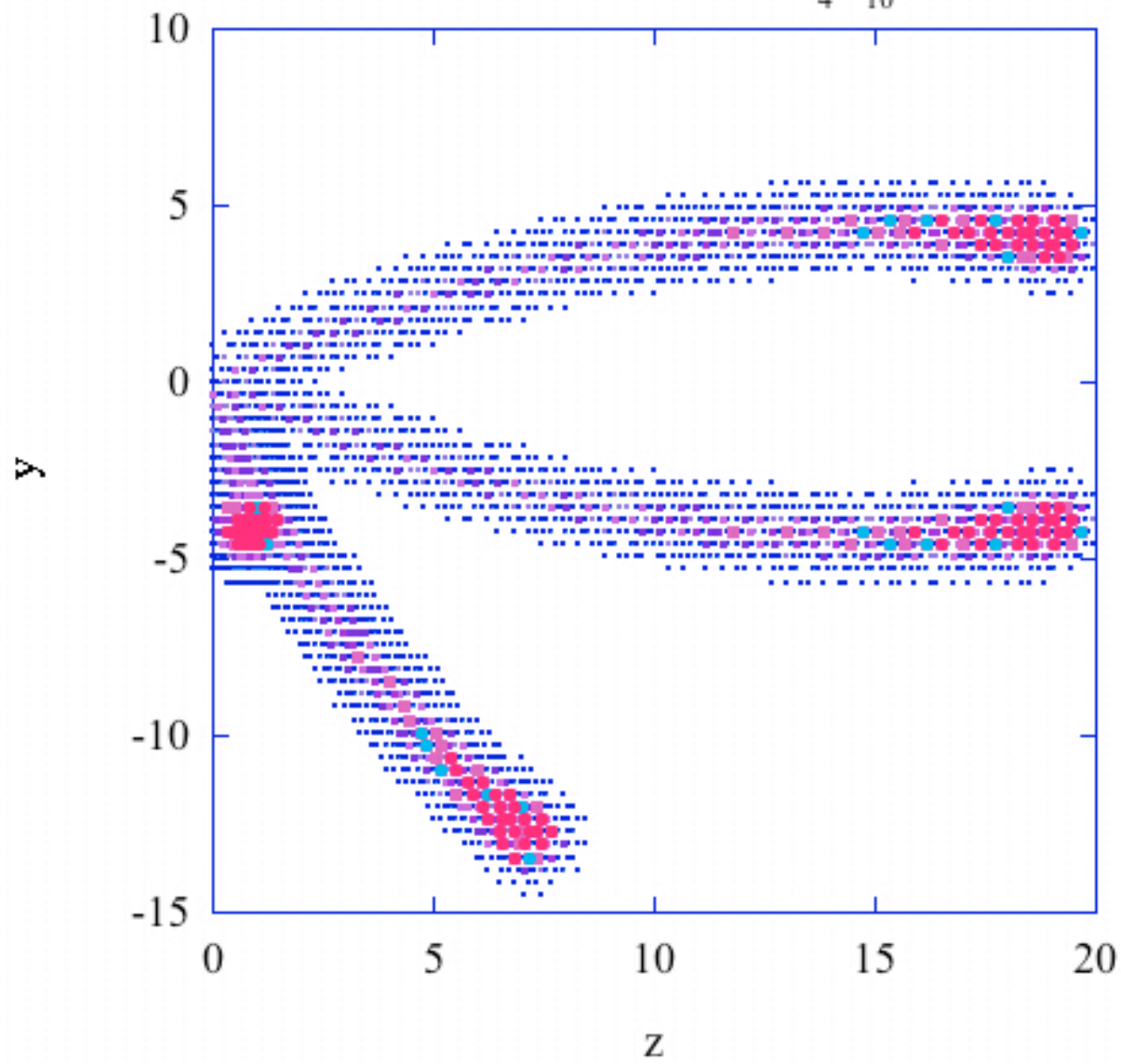
induction in a circle units r/h
distance of cercle in units of x/h
h=distance anode cathode
k3=0.6 Mathieson

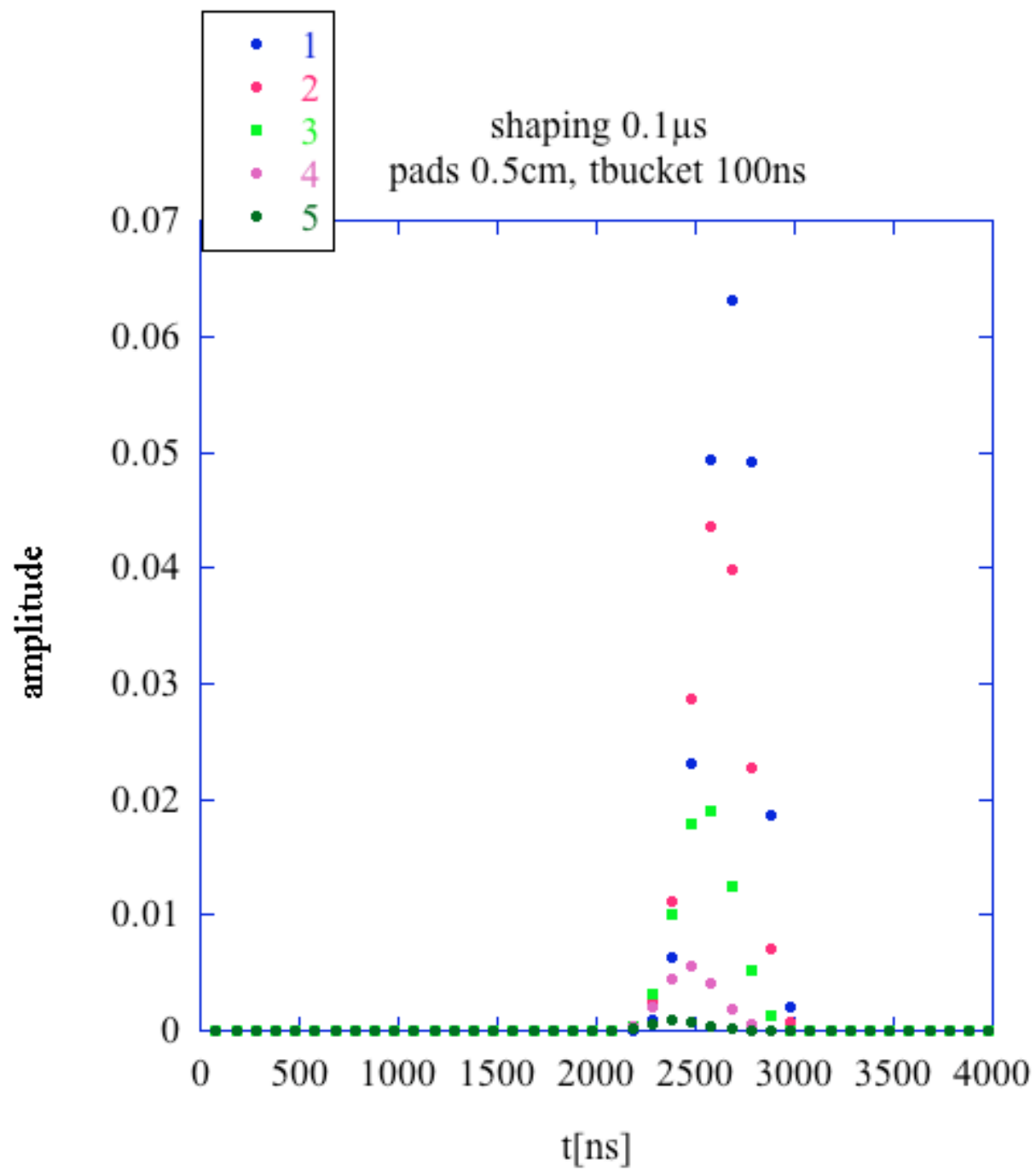


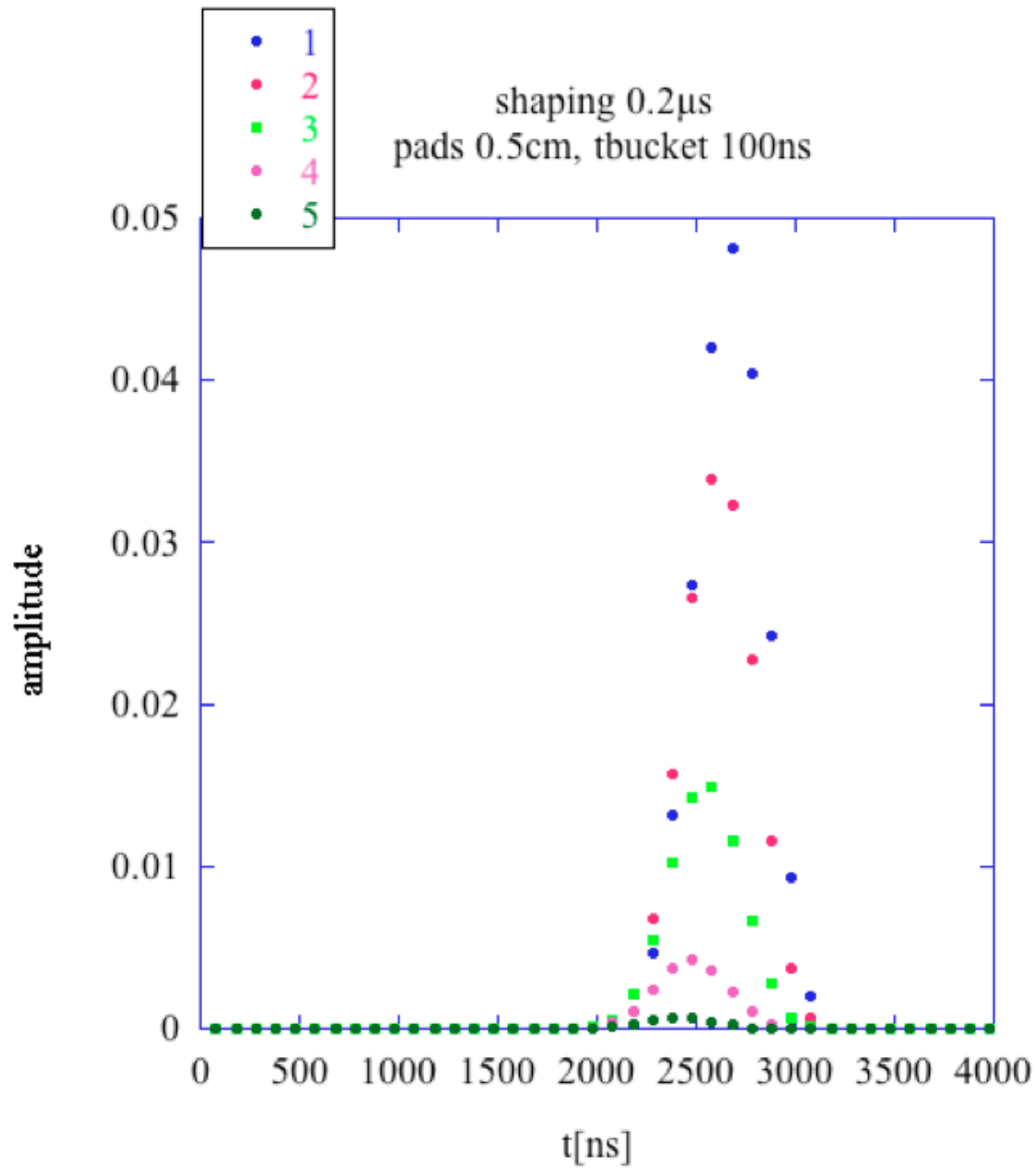
Diffusion: $d_{x,y,z}=0.05\text{cm}*\text{sqrt}(z[\text{cm}])$



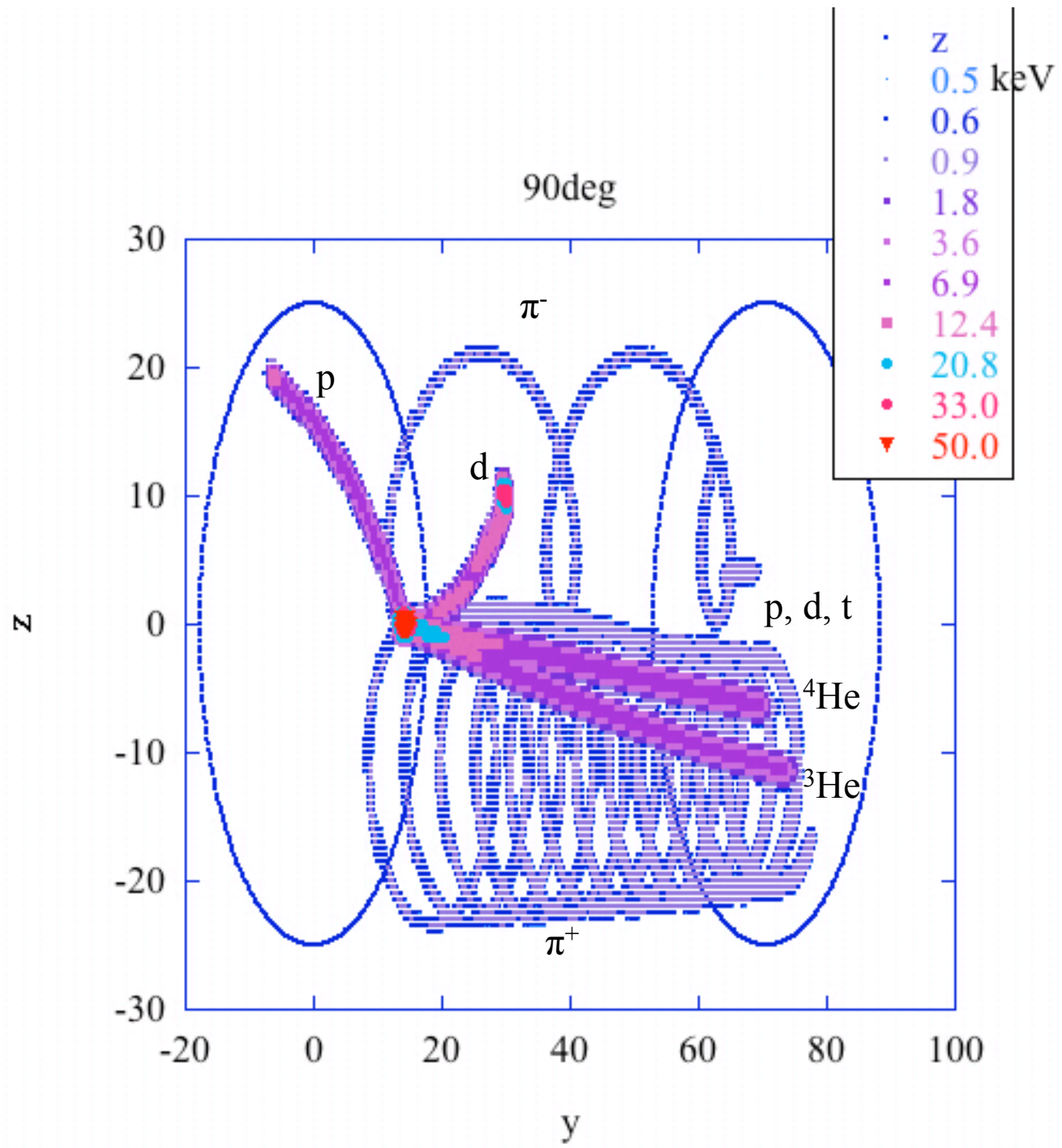
protons 9MeV 2atm C H₄¹⁰

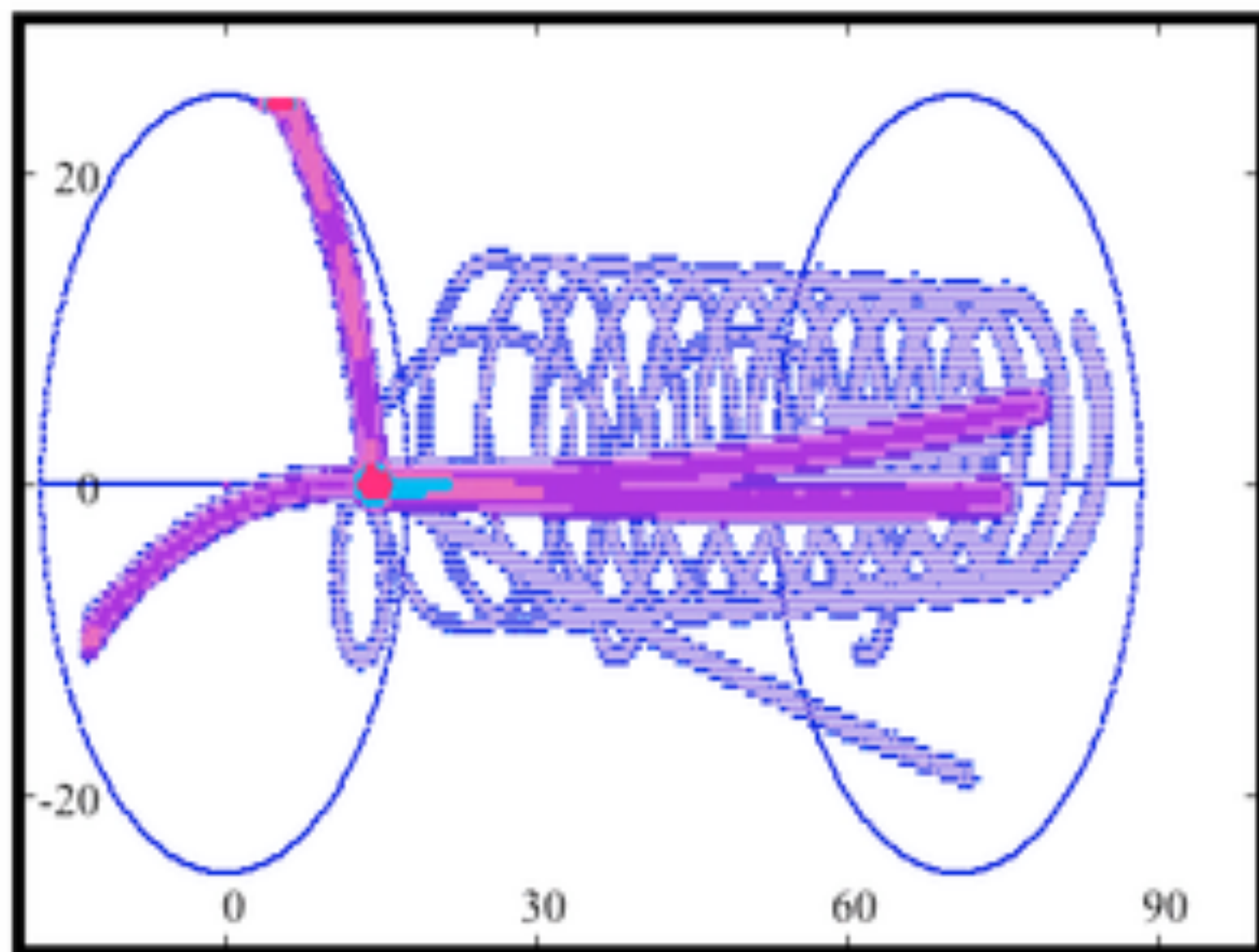


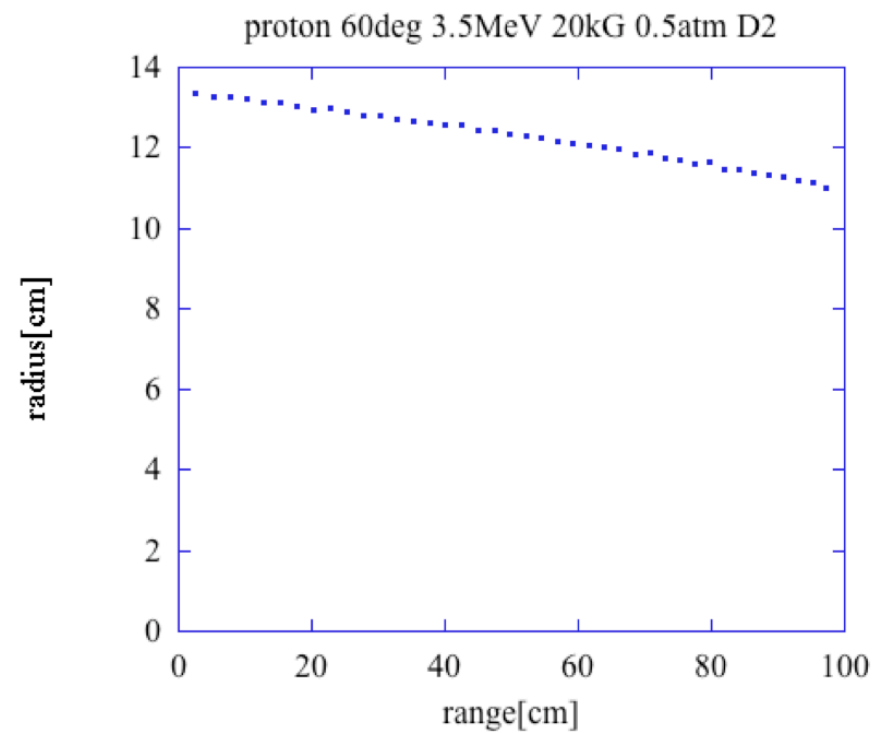
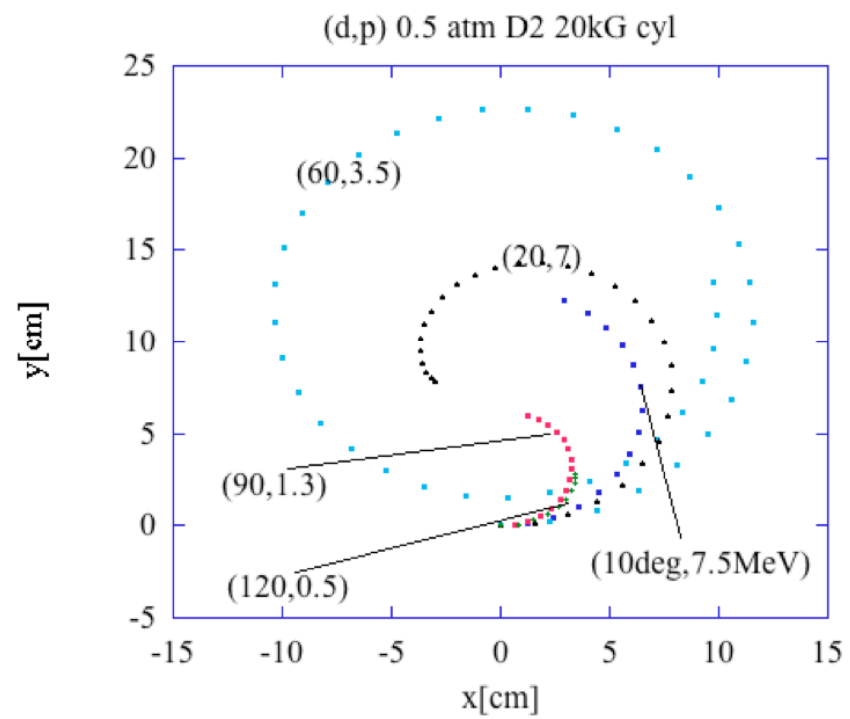




Time structure in some neighbouring pads (arbitrarily choose) ,
for a single particle

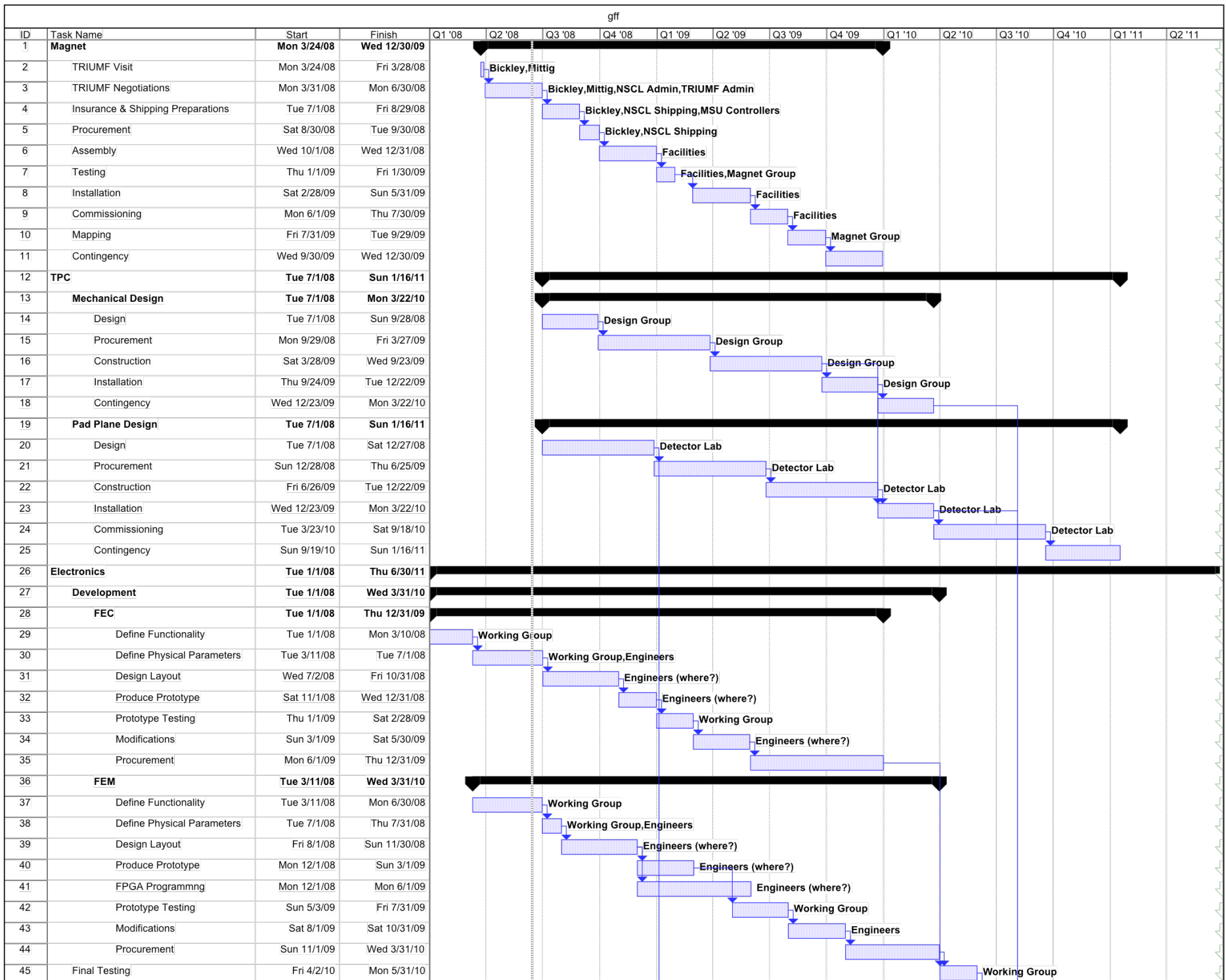


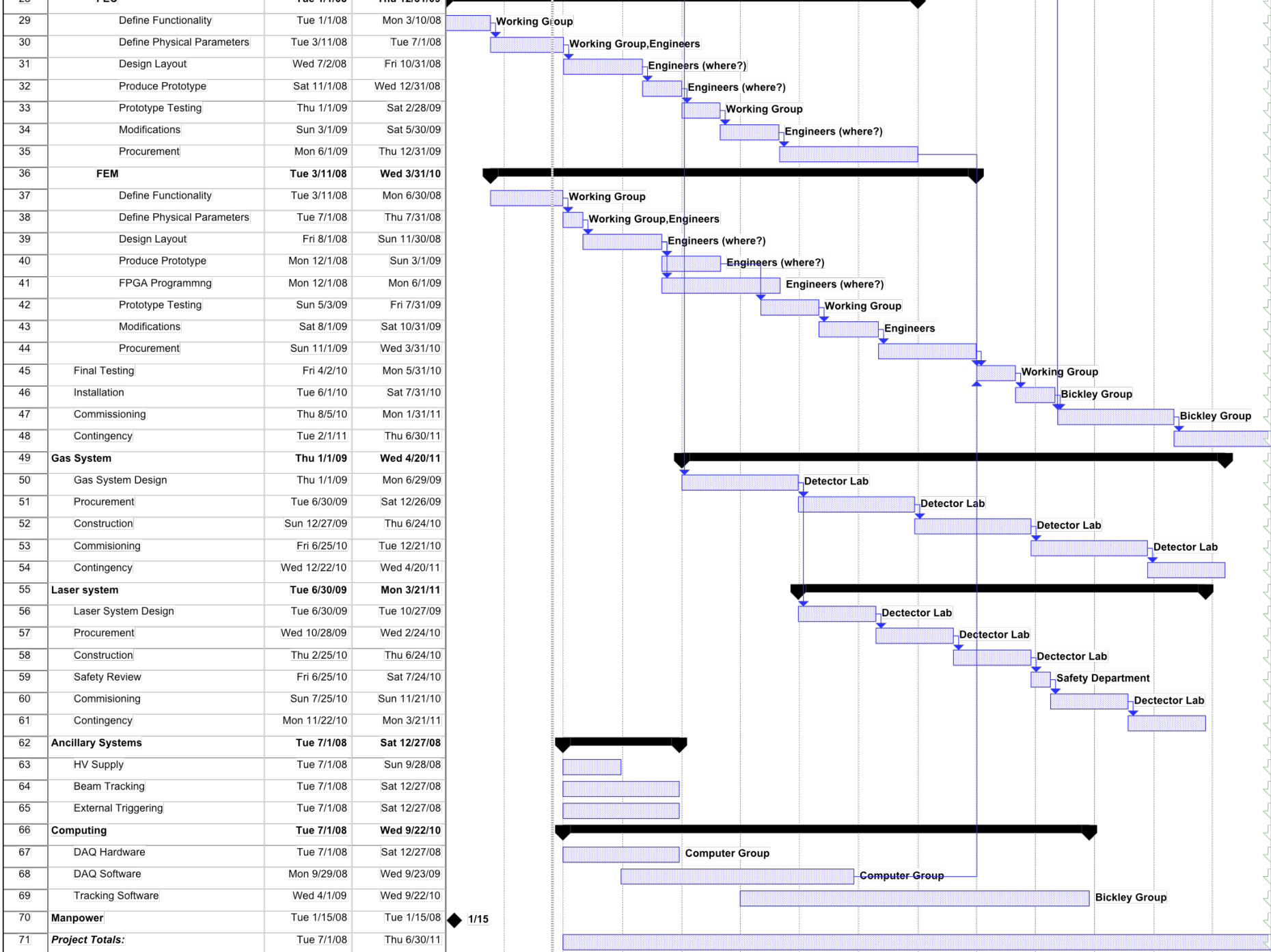




Questions to be addressed

- Short tracks, finer pads near center
- What type of pads, what geometry → Gems, wires, micromegas,...
- Reconstruction of physical parameters (magnetic rigidity, angle, range,...) for realistic traces
- Interconnection between technical choices
- Last not least: financial schedule





Project: TPC_v2 Date: Fri 6/13/08	Task		Summary		Rolled Up Progress		Project Summary	
	Progress		Rolled Up Task		Split		Group By Summary	
	Milestone		Rolled Up Milestone		External Tasks		Deadline	