

Highlights

- >> Anywhere, anytime remote monitoring of MicroTCA™ platforms via an internet connection
- >> Single point of contact for the status and configuration of all elements within the MicroTCA™ system
- >> Provides management interface that identifies all AMC modules
- >> Review performance and status on CPU modules such as software installed and IP configuration
- >> Flexible configuration of AMC I/O modules such as protocols and control signals, TDM mapping, and channel configuration
- >> Web-based GUI - no development necessary
- >> Designed for single platform monitoring
- >> Interfaces to both IPMI and NexusWare® OS

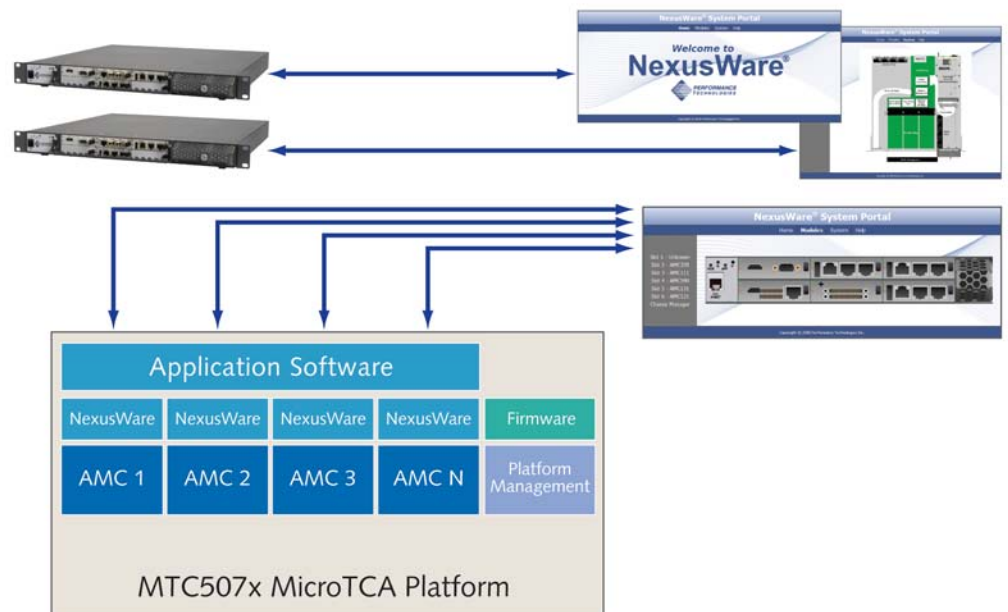


GUI Screen Shot of MTC507X

NexusWare® Portal is a web-based management and development tool in NexusWare Core used to remotely manage, monitor, and maintain the current configuration of each AdvancedMC™ module within a Performance Technologies' MicroTCA™ platform as well as monitoring the functionality and operations of the MicroTCA platform itself.

Through a flexible, web-based graphical user interface (GUI), NexusWare Portal assists application developers and system integrators by allowing them to monitor AND manage vital system functions as they develop and test applications.

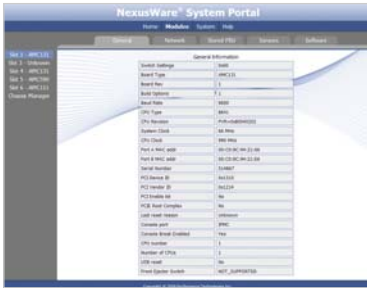
Portal provides queried and status information from each AMC module. Using the NexusWare IPMI API, it communicates directly with the MicroTCA Carrier Management Controller (MCMC) within the MTC507x platform.





NexusWare® Portal

Web-based Management and Development Tool



Switch Settings	0x00
Board Type	AMC131
Board Rev	1
Build Options	1
Baud Rate	9600
CPU Type	8641
CPU Revision	PVR=0x80040202
System Clock	66 MHz
CPU Clock	990 MHz
Port A MAC addr	00:CD:8C:94:21:66
Port B MAC addr	00:CD:8C:94:21:E6
Serial Number	514867
PCI Device ID	0x1310
PCI Vendor ID	0x1214
PCI Enable bit	No
PCIE Root Complex	No
Last reset reason	Unknown
Console port	IPMC
Console Break Enabled	Yes
CPU number	1
Number of CPUs	1
USB reset	No
Front Ejector Switch	NOT_SUPPORTED

Sample "General Tab" Screen

NexusWare® Portal

NexusWare Portal has full access to all the on-board functionality of any module using Performance Technologies NexusWare as the embedded Operating System. At the AMC-module level Portal can display:

- All modules installed in the system. Portal will refresh the display when modules are removed and/or added.
- Specific module information such as serial number, module ID and revisions levels
- Current Ethernet configuration
- Stored Field Replaceable Units (FRU) information
- Sensor Data Records
- Software image identifiers including the MMC Firmware, Boot PROM, and NexusWare

System Level

At the MTC507x chassis-management level Portal can display:

- Queried FRU information
- System Event Log (SEL) from each module and SDRs
- Ethernet Switch configuration (future release)

General Tab

For each module in the chassis, the General tab displays various informational parameters and addresses for the module. The following statistics may be displayed on the General tab: Baud Rate, Board Rev, Board Type, Build Options, Console, Console Break Enabled, Console Port, CPU Clock, CPU Number, CPU Revision, CPU Type, Front Ejector Switch, Last Reset Reason, Number of CPUs, PCI Device ID, PCI Enable Bit, PCI Vendor ID, PCIE Root Complex, Port A MAC Addr, Port B MAC Addr, Serial Number, Switch Settings, System Clock, and USB Reset.

NOTE: This tab is not available for the chassis manager.

FRU Overview

The FRU Overview screen displays details for the FRUs (AMC modules) in the system, as well as information for the system as a whole. Each blue bar tab accesses board and product information for each FRU in the chassis and for the chassis manager. The following statistics are displayed for each FRU and the chassis manager: Board Manufacturer, Board Product Name, Board Serial Number, Board Part Number, Product FRU File ID, Product Manufacturer, Product Name, Product Model Number, Product Version, Product Serial Number, and Product FRU File ID.

Stored FRU Tab

The Stored FRU tab displays IPMC Information for each AMC module in the chassis, or for the chassis as a whole. The following statistics may be displayed on the Stored FRU tab: Board FRU File ID, Board Manufacturer, Board Part Number, Board Product Name, Board Serial Number, Geo Address, Product FRU File ID, Product Model Number, Product Name, Product Serial Number, Product Version, and Version.

Sensors Tab

The Sensors tab displays Sensor Data Records for each AMC module in the chassis, or for all sensors in the system, depending on the element selected. Each blue bar tab can access data for each sensor on the module or in the system. The sensor name is color-coded to indicate the level of the sensor event. The following statistics may be displayed on the Sensor tab for each sensor on the module or in the system: LUN, Sensor #, and Type.

Corporate Headquarters:

Performance Technologies
205 Indigo Creek Drive
Rochester, NY 14626

Tel: 585.256.0200
Fax: 585.256.0791
E-mail: sales@pt.com

European Headquarters:

Performance Technologies UK Ltd.
Challenge House
Sherwood Drive, Bletchley
Milton Keynes, MK3 6DP

Tel: +44 (0) 1908 646000
Fax: +44 (0) 1908 646001
E-mail: sales@pt.com

www.pt.com